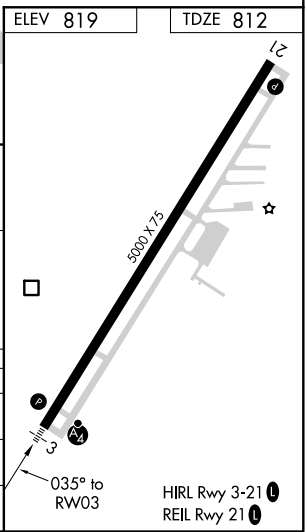
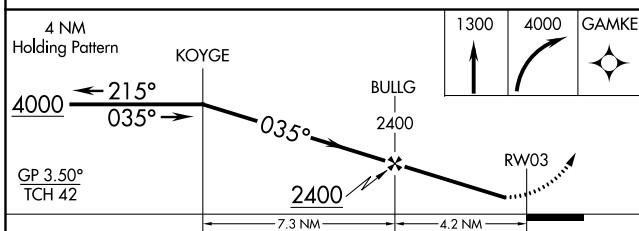
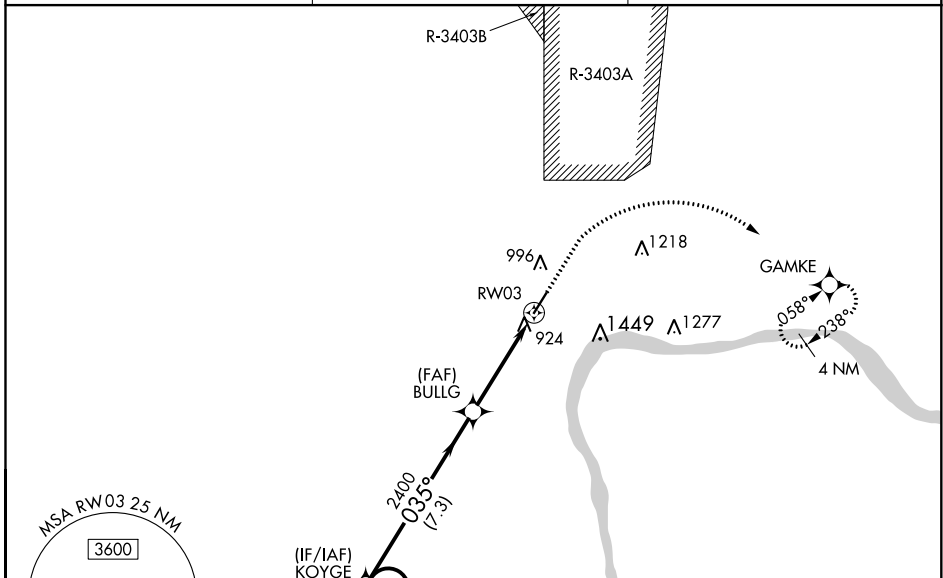


WAAS CH 45708 W03A	APP CRS 035°	Rwy Idg 5000 TDZE 812 Apt Elev 819
--	------------------------	---

RNAV (GPS) Z RWY 3

MADISON MUNI (IMS)

<p>NA</p> <p>For uncompensated Baro-VNAV systems, LNAV/VNAV NA below -16°C (4°F) or above 54°C (130°F). DME/DME RNP-0.3 NA. Rwy 3 helicopter visibility reduction below 3/4 SM NA. For inoperative ALS, increase **LNAV/VNAV all Cats visibility to 7/8 SM. For inoperative ALS when using Bowman Field altimeter setting, increase LPV all Cats visibility to 1 3/8 SM; increase **LNAV/VNAV all Cats visibility to 7/8 SM and LNAV/VNAV all Cats visibility to 2 1/2 SM.</p>	<p>MALSF</p>	<p>MISSED APPROACH: Climb to 1300 then climbing right turn to 4000 direct GAMKE and hold, continue climb-in-hold to 4000. **Missed approach requires minimum climb of 410 feet per NM to 1900.</p>
	<p>AWOS-3 119.175</p> <p>LOUISVILLE APP CON 132.075 327.0</p> <p>UNICOM 123.0 (CTAF) 0</p>	



CATEGORY	A	B	C	D
LPV DA	1142-3/4	330 (400-3/4)		NA
LNAV/VNAV DA**	1095-3/4	283 (300-3/4)		NA
LNAV/VNAV DA	1420-1 5/8	608 (700-1 5/8)		NA

EC-2, 31 DEC 2020 to 28 JAN 2021

EC-2, 31 DEC 2020 to 28 JAN 2021