

WAAS CH 86229 W18A	APP CRS 179°	Rwy Idg TDZE Apt Elev	5849 71 75
---------------------------------	------------------------	-----------------------------	---------------------------------------

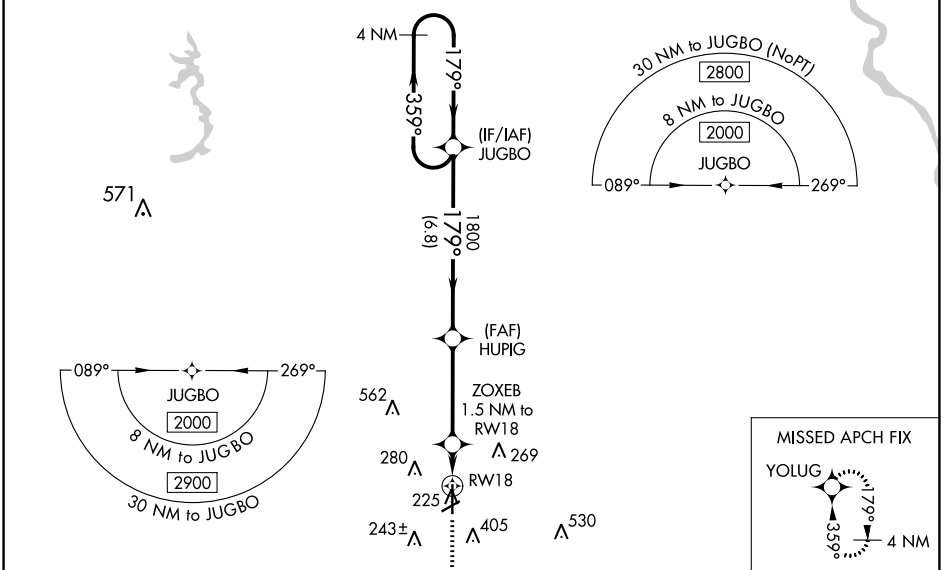
RNAV (GPS) RWY 18

ST LANDRY PARISH-AHART FIELD (OPL)

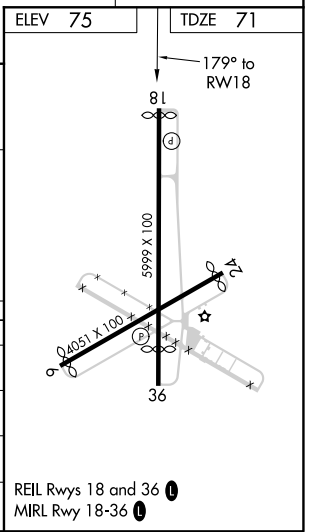
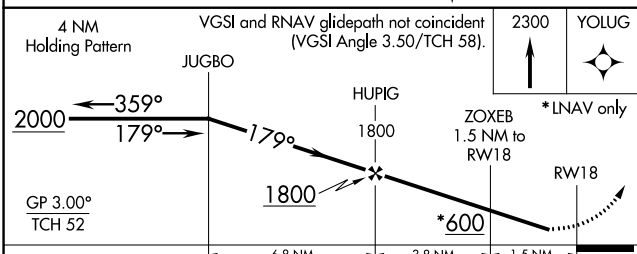
⚠ Baro-VNAV NA when using Lafayette altimeter setting. For uncompensated Baro-VNAV systems, LNAV/VNAV NA below -15°C (5°F) or above 43°C (109°F). When VGSI inop, Straight-in/Circling Rwy 18 procedure NA at night. DME/DME RNP-0.3 NA. Helicopter visibility reduction below 1 SM NA. Circling to Rwy 6/24 NA at night. When local altimeter setting not received, use Lafayette altimeter setting and increase all DA 56 feet and all MDA 60 feet, increase LNAV/VNAV all Cats visibility and LNAV and Circling Cat C and D visibility ¼ mile.

MISSED APPROACH: Climb to 2300 direct YOLUG and hold.

AWOS-3PT 118.775	LAFAYETTE APP CON ★ 128.7 268.7	UNICOM 123.0 (CTAF) 0
----------------------------	---	---------------------------------



ELEV 75	TDZE 71
---------	---------



CATEGORY	A	B	C	D
LPV DA		321-1	250 (300-1)	
LNAV/VNAV DA		386-1	315 (400-1)	
LNAV MDA	480-1	409 (500-1)	480-1½	409 (500-1½)
CIRCLING	780-1	705 (800-1)	780-2	780-2¼
			705 (800-2)	705 (800-2¼)

REIL Rwy 18 and 36 0
MIRL Rwy 18-36 0

SC-4, 31 DEC 2020 to 28 JAN 2021

SC-4, 31 DEC 2020 to 28 JAN 2021