

VORTAC LFT 109.8 Chan 35	APP CRS 343°	Rwy Idg TDZE Apt Elev 5210 74 75
---------------------------------------	------------------------	--

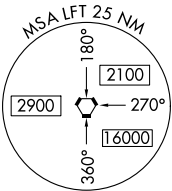
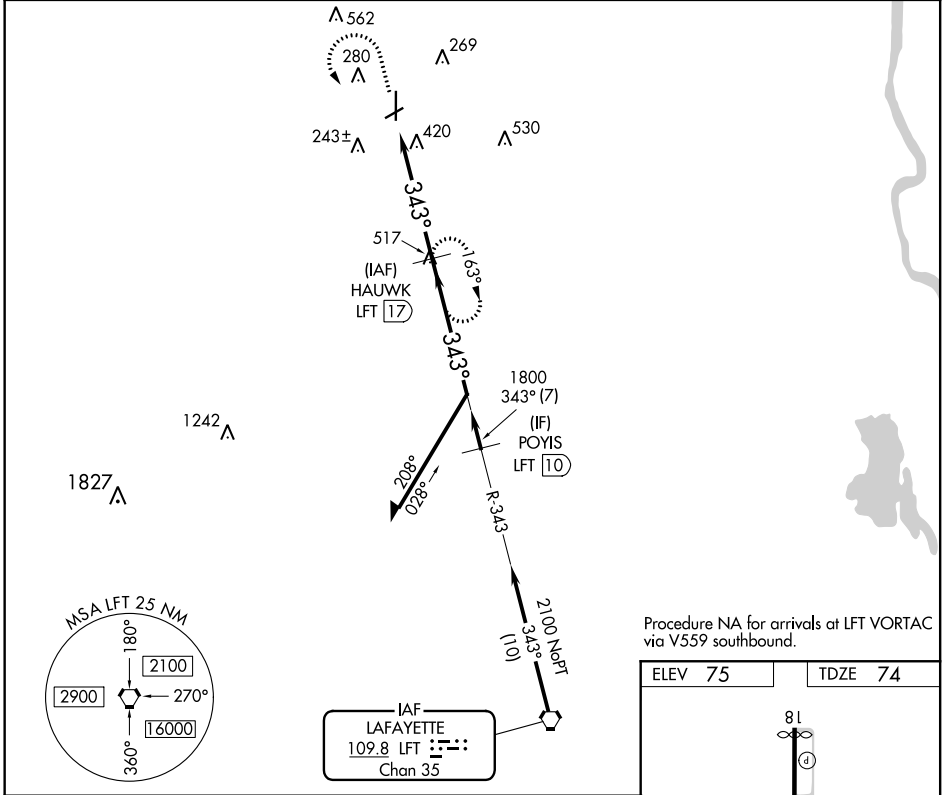
VOR/DME RWY 36

ST LANDRY PARISH-AHART FIELD (OPL)

▼ If local altimeter setting not received, use Lafayette Rgnl altimeter setting and increase all MDAs 60 feet. Rwy 36 helicopter visibility reduction below 3/4 SM NA. Circling Rwy 6, 24 NA at night.

▲NA MISSED APPROACH: Climb to 1000 then climbing left turn to 2100 via heading 120° and LFT R-343 to HAUWK 17 DME and hold.

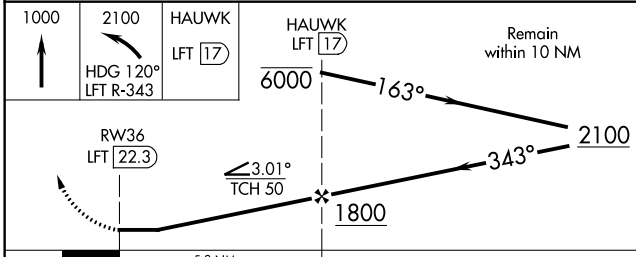
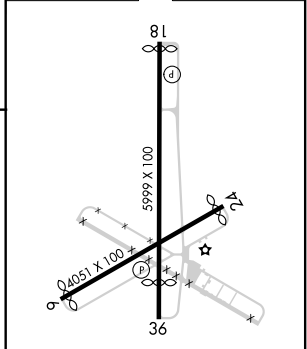
AWOS-3PT 118.775	LAFAYETTE APP CON* 128.7 266.7	UNICOM 123.0 (CTAF) 0
----------------------------	--	---------------------------------



IAF LAFAYETTE
109.8 LFT
Chan 35

Procedure NA for arrivals at LFT VORTAC via V559 southbound.

ELEV 75	TDZE 74
---------	---------



CATEGORY	A	B	C	D
S-36	720-1 646 (700-1)	720-1¼ 646 (700-1¼)	720-1¾ 646 (700-1¾)	720-2 646 (700-2)
CIRCLING	780-1 705 (800-1)	780-1¼ 705 (800-1¼)	780-2 705 (800-2)	780-2¼ 705 (800-2¼)

MIRL Rwy 18-36 0
REL Rwy 18 and 36 0

SC-4, 31 DEC 2020 to 28 JAN 2021

SC-4, 31 DEC 2020 to 28 JAN 2021