

| | | | |
|--|------------------------|-----------------------------|---|
| WAAS CH 61335 W35A | APP CRS 348° | Rwy Idg TDZE Apt Elev | 5003 927 936 |
|--|------------------------|-----------------------------|---|

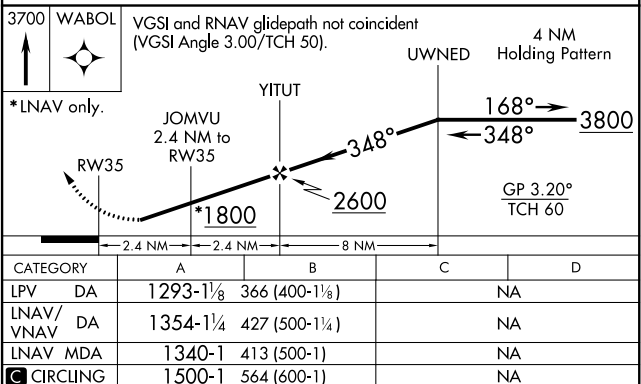
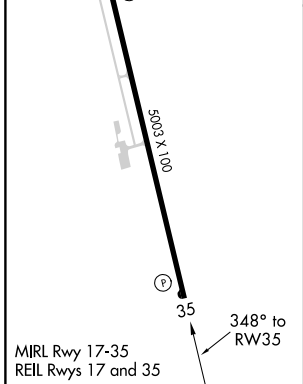
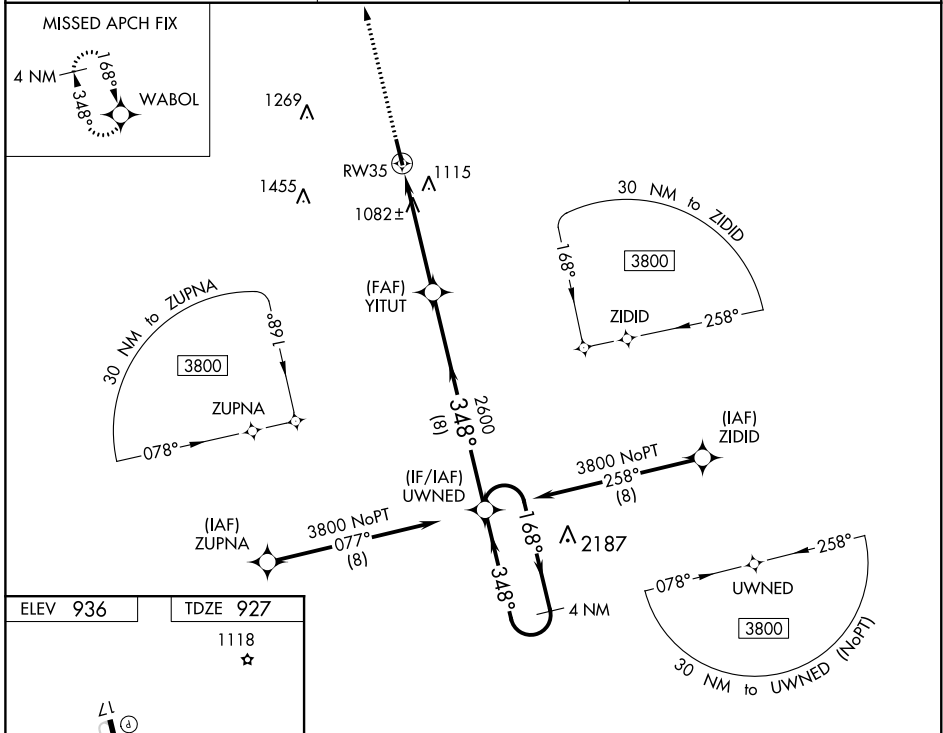
RNAV (GPS) RWY 35

LAWRENCEBURG-LAWRENCE COUNTY (2M2)

⚠ Circling Rwy 17 NA at night. For uncompensated Baro-VNAV systems, LNAV/VNAV NA below -16°C (5°F) or above 54°C (130°F). DME/DME RNP-0.3 NA. When local altimeter setting not received, use Huntsville Intl-Carl T Jones Field altimeter setting and increase all DA 142 feet and all MDA 140 feet; increase LPV all Cats visibility ¼ mile, LNAV/VNAV all Cats visibility ⅓ mile. Rwy 17 helicopter visibility reduction below 1 SM NA. Rwy 35 helicopter visibility reduction below ¾ SM NA.

⚠ NA MISSED APPROACH: Climb to 3700 direct WABOL and hold.

| | | |
|--------------------------|--|-------------------------------|
| AWOS-3 120.175 | MEMPHIS CENTER 125.85 379.25 | UNICOM 122.8 (CTAF) |
|--------------------------|--|-------------------------------|



SE-1, 31 DEC 2020 to 28 JAN 2021

SE-1, 31 DEC 2020 to 28 JAN 2021