

WAAS CH <b>93735</b> <b>W02A</b>	APP CRS <b>018°</b>	Rwy Idg TDZE <b>262</b> Apt Elev <b>262</b>	<b>5000</b>
--	------------------------	---	-------------

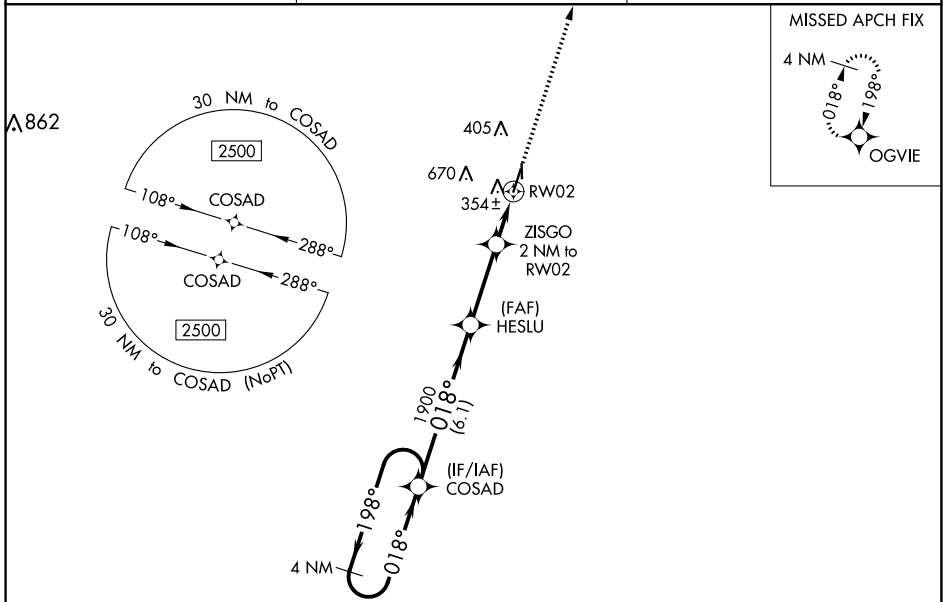
# RNAV (GPS) RWY 2

KENNETT MEMORIAL (TKX)

**⚠ NA** Circling to Rwy 18/36 NA at night. For uncompensated Baro-VNAV systems, LNAV/VNAV NA below -16°C (4°F) or above 54°C (130°F). Circling NA west of Rws 2 and 18. DME/DME RNP-0.3 NA. When local altimeter setting not received, use Blytheville altimeter setting and increase all DA 47 feet and all MDA 60 feet; increase LNAV/VNAV visibility all Cats and LNAV Cats C/D visibility 1/8 mile; increase Circling Cat D visibility 1/4 mile. Helicopter visibility reduction below 1 SM NA. Rwy 2 Straight-in and Circling minimums NA at night.

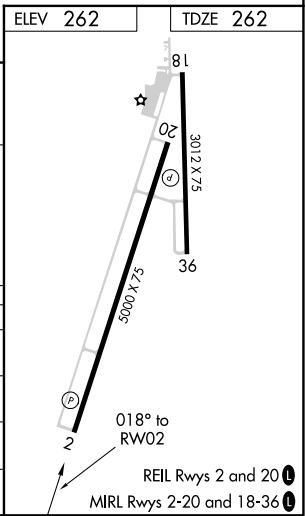
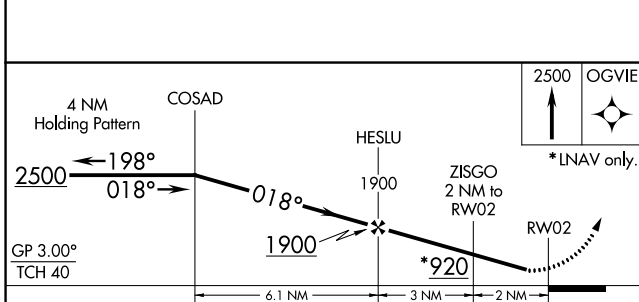
**MISSED APPROACH:**  
Climb to 2500 direct OGVIE and hold.

AWOS-3PT <b>119.05</b>	MEMPHIS CENTER <b>120.075 289.4</b>	UNICOM <b>122.8 (CTAF) 0</b>
---------------------------	--	---------------------------------



NC-3, 31 DEC 2020 to 28 JAN 2021

NC-3, 31 DEC 2020 to 28 JAN 2021



CATEGORY	A	B	C	D
LPV DA		512-1	250 (300-1)	
LNAV/VNAV DA		538-1	276 (300-1)	
LNAV MDA		620-1	358 (400-1)	
<b>C</b> CIRCLING	660-1 398 (400-1)	720-1 458 (500-1)	720-1½ 458 (500-1½)	900-2 638 (700-2)