

WAAS CH 90434 W05A	APP CRS 051°	Rwy Idg TDZE Apt Elev	5506 1545 1545
--	------------------------	-----------------------------	---

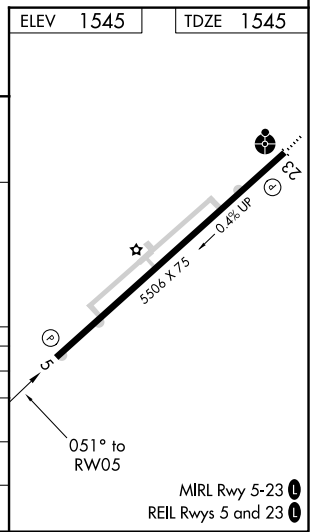
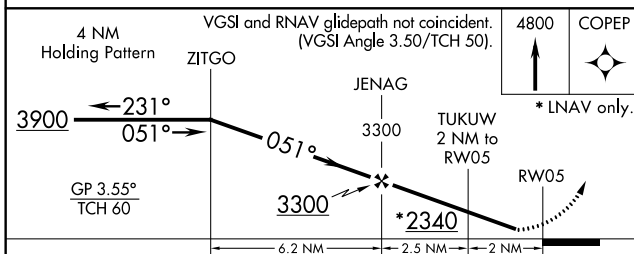
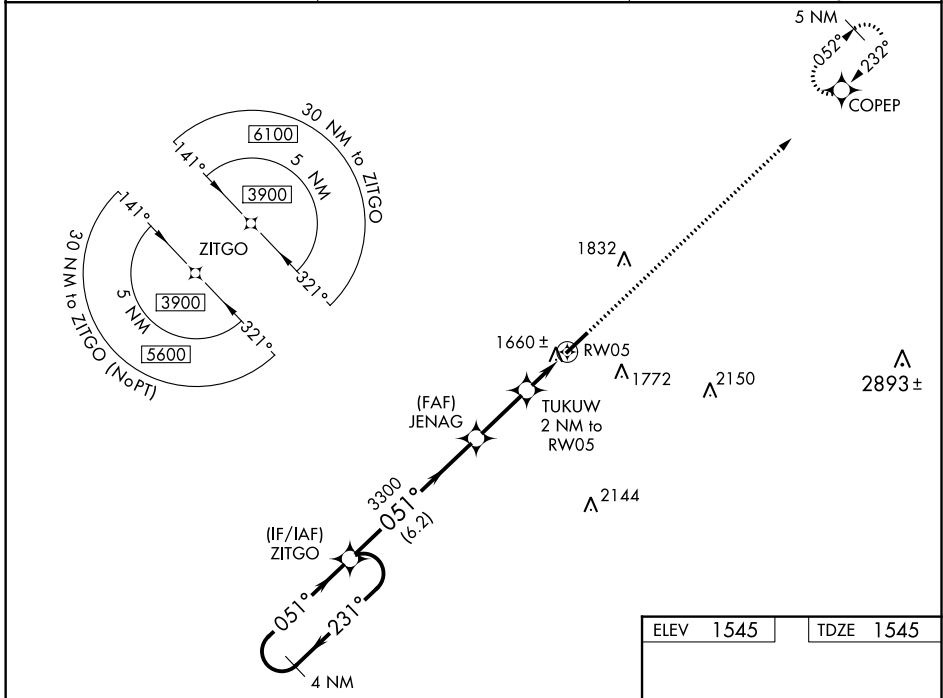
RNAV (GPS) RWY 5

SCOTT MUNI (SCX)

NA Baro-VNAV NA when using Monticello altimeter setting. For uncompensated Baro-VNAV systems, LNAV/VNAV NA below -18°C (0°F) or above 47°C (118°F). DME/DME RNP-0.3 NA. When local altimeter setting not received, use Monticello altimeter setting: increase LPV DA to 2180 feet, LNAV/VNAV DA to 2092 feet and all visibilities ¾ mile; increase all MDA 240 feet and LNAV Cat C visibility ¾ mile and Circling Cat C 1 mile. Night landing: Rwy 5 NA. Helicopter visibility reduction below 1 SM NA.

MISSED APPROACH:
Climb to 4800 direct COPEP and hold.

AWOS-3 135.025	INDIANAPOLIS CENTER 124.625 371.925	UNICOM 122.8 (CTAF) 0
--------------------------	---	---------------------------------



CATEGORY	A	B	C	D
LPV DA	1948-1 1/8 403 (500-1 1/8)			NA
LNAV/VNAV DA	1860-1 315 (400-1)			NA
LNAV MDA	1960-1 415 (500-1)	1960-1 1/8 415 (500-1 1/8)		NA
C CIRCLING	2040-1 495 (500-1)	2200-1 3/4 655 (700-1 3/4)		NA

SE-1, 31 DEC 2020 to 28 JAN 2021

SE-1, 31 DEC 2020 to 28 JAN 2021

MIRL Rwy 5-23 **0**
REIL Rws 5 and 23 **0**