

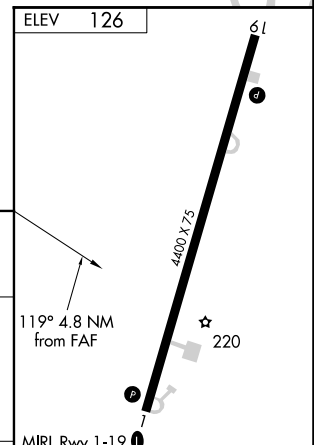
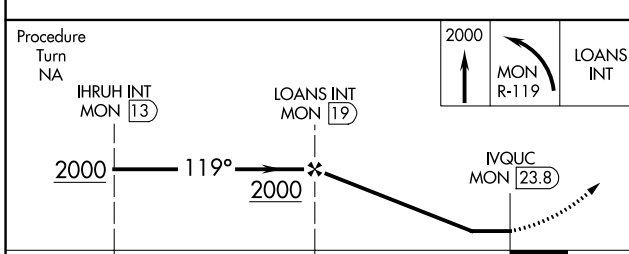
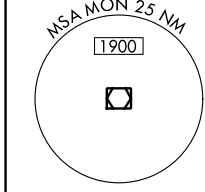
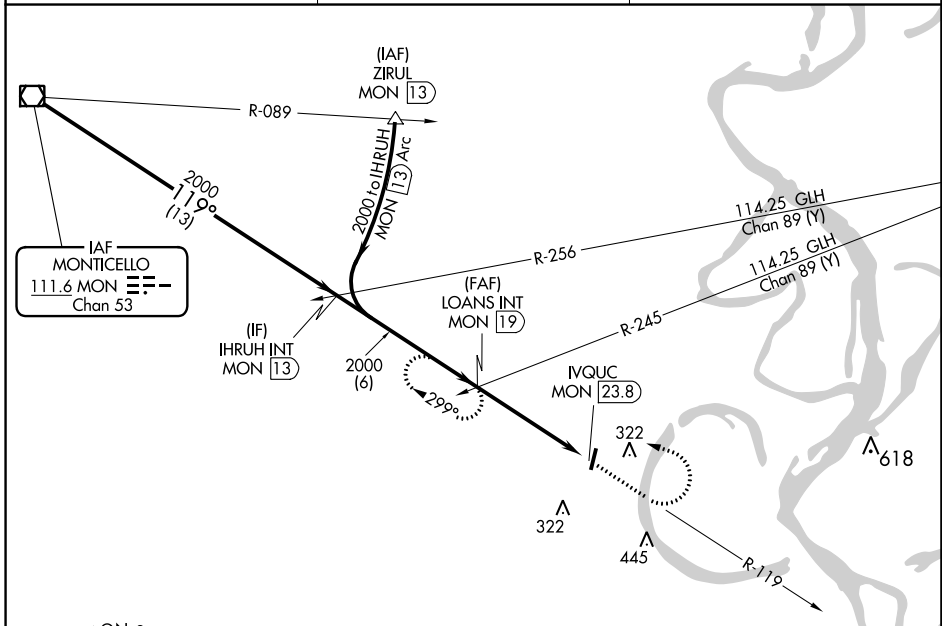
VOR/DME MON 111.6 Chan 53	APP CRS 119°	Rwy Idg TDZE Apt Elev	N/A N/A 126
---	------------------------	-----------------------------	--

VOR-A
LAKE VILLAGE MUNI (M32)

▼ Circling NA east of runway 1-19. Use Greenville, MS altimeter setting; when not received use Monticello altimeter setting and increase all MDA 60 feet. Increase Cat C visibility ¼ mile. Helicopter visibility reduction below 1 SM NA. Procedure NA at night.

▲ NA MISSED APPROACH: Climb to 2000 then left turn on MON VOR/DME R-119 to LOANS INT/19 DME and hold.

GLH ASOS 125.525	MEMPHIS CENTER 135.875 269.35	CTAF 122.90
----------------------------	---	-----------------------



CATEGORY	A	B	C	D	FAF to MAP 4.8 NM					
	680-1 554 (600-1)	720-1 594 (600-1)	720-1½ 594 (600-1½)	720-2 594 (600-2)	Knots	60	90	120	150	180
C CIRCLING					Min:Sec	4:48	3:12	2:24	1:55	1:36

SC-1, 31 DEC 2020 to 28 JAN 2021

SC-1, 31 DEC 2020 to 28 JAN 2021