

| | |
|------------------------|------------------------|
| APP CRS 012° | Rwy Idg 5004 |
| | TDZE 278 |
| | Apt Elev 278 |

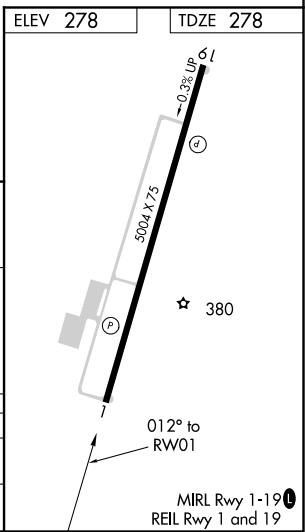
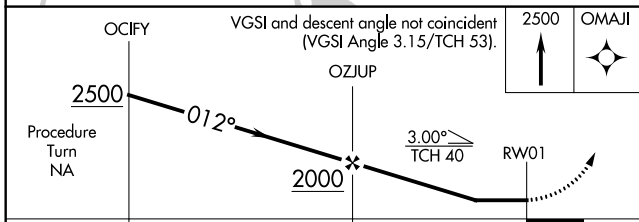
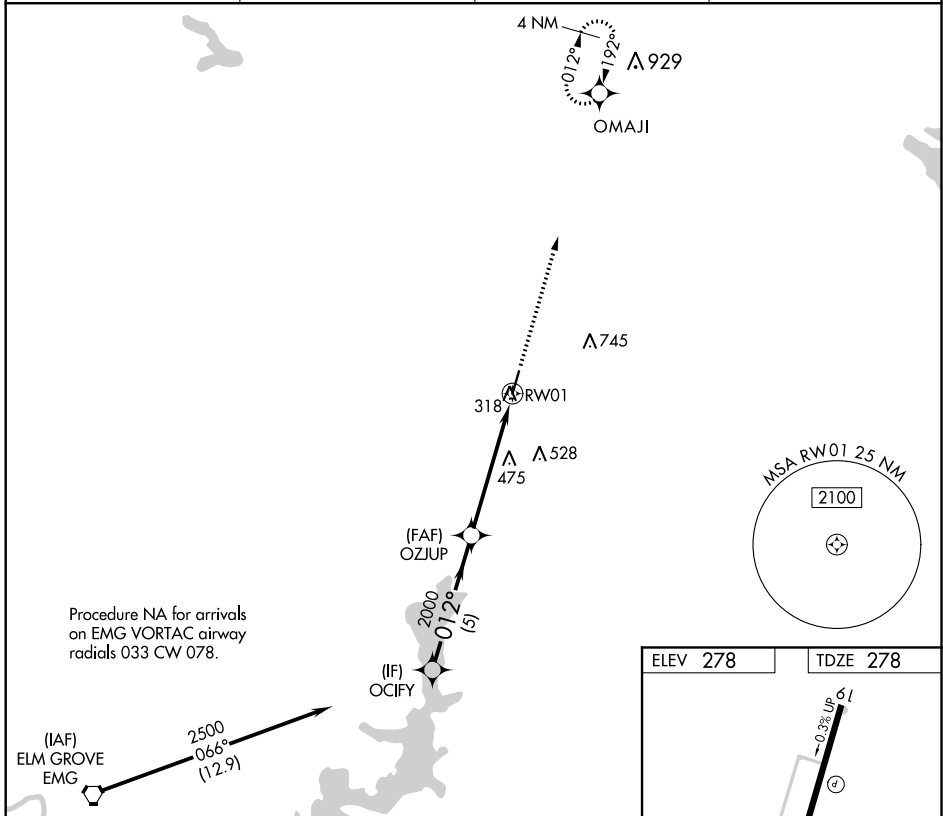
RNAV (GPS) RWY 1

MINDEN (MNE)

⚠ When VGSI inop, procedure NA at night. DME/DME RNP-0.3 NA. Helicopter visibility reduction below 1 SM NA. When local altimeter setting not received, use Barksdale AFB altimeter setting and increase all MDA 80 feet: visibility LNAV Cat C and D and Circling Cat C to 1¼.

⚠ MISSED APPROACH: Climb to 2500 direct OMAJI and hold.

| | | | |
|----------------------------|---|-----------------------|--|
| AWOS-3PT 119.325 | SHREVEPORT APP CON 123.75 360.725 | GCO 135.075 | UNICOM 122.8 (CTAF) Ⓛ |
|----------------------------|---|-----------------------|--|



| CATEGORY | A | B | C | D |
|----------|----------------------|----------------------|------------------------|----------------------|
| LNAV MDA | 780-1 | 502 (600-1) | 780-1¾ | 502 (600-1¾) |
| CIRCLING | 780-1 502 (600-1) | 820-1 542 (600-1) | 820-1½ 542 (600-1½) | 840-2 562 (600-2) |

SC-4, 31 DEC 2020 to 28 JAN 2021

SC-4, 31 DEC 2020 to 28 JAN 2021