

APP CRS	Rwy Idg	5004
192°	TDZE	269
	Apt Elev	278

RNAV (GPS) RWY 19

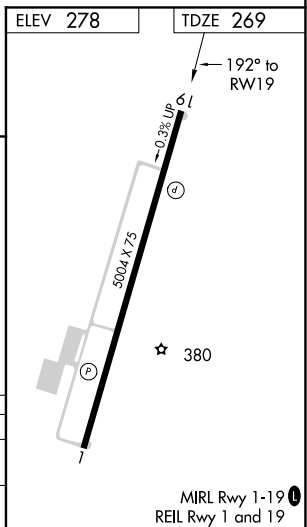
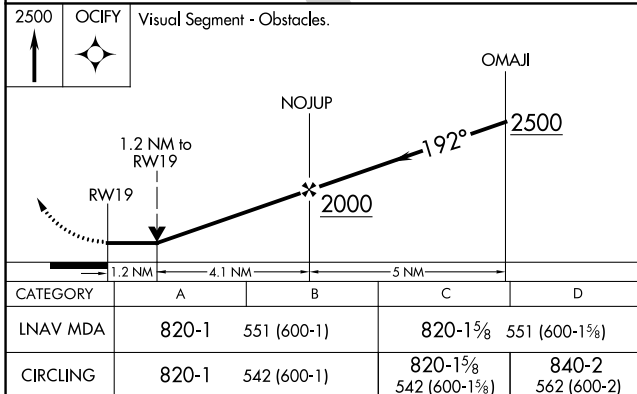
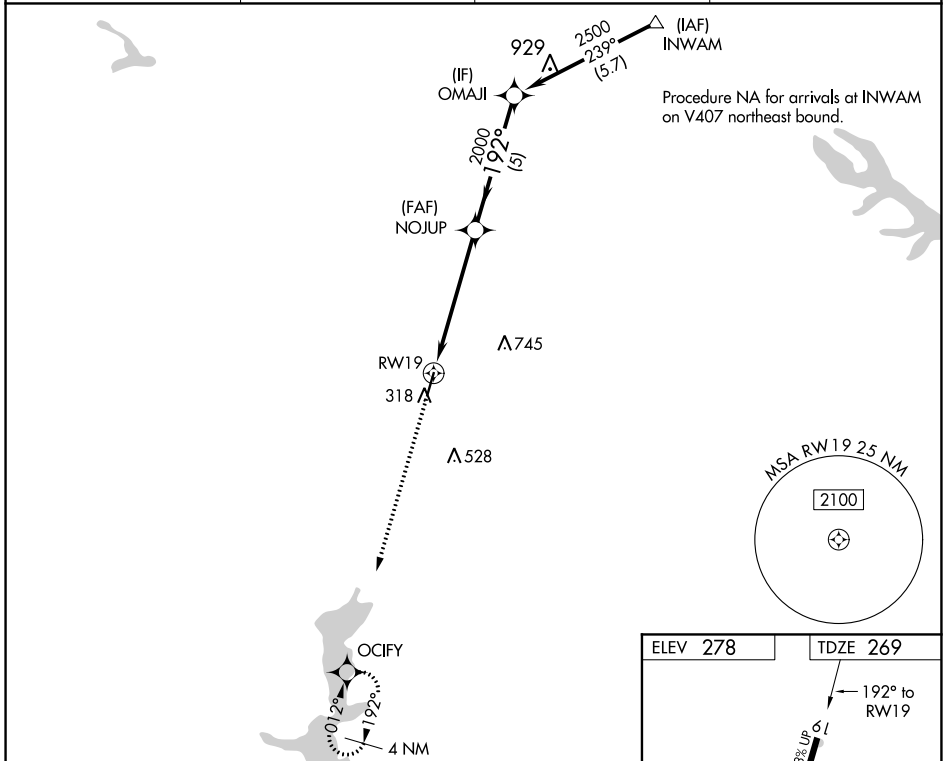
MINDEN (MNE)

RNP APCH.

▼ Rwy 19 helicopter visibility reduction below 3/4 SM NA. Obtain local altimeter setting on CTAF; when not received, use Barksdale AFB altimeter setting and increase all MDA 80 feet; increase visibility LNAV Cats C and D and Circling Cat C to 1 3/4 SM.

▲ MISSED APPROACH: Climb to 2500 direct OCIFY and hold.

AWOS-3PT 119.325	SHREVEPORT APP CON 123.75 360.725	GCO 135.075	UNICOM 122.8 (CTAF) 0
----------------------------	---	-----------------------	---------------------------------



SC-4, 31 DEC 2020 to 28 JAN 2021

SC-4, 31 DEC 2020 to 28 JAN 2021