

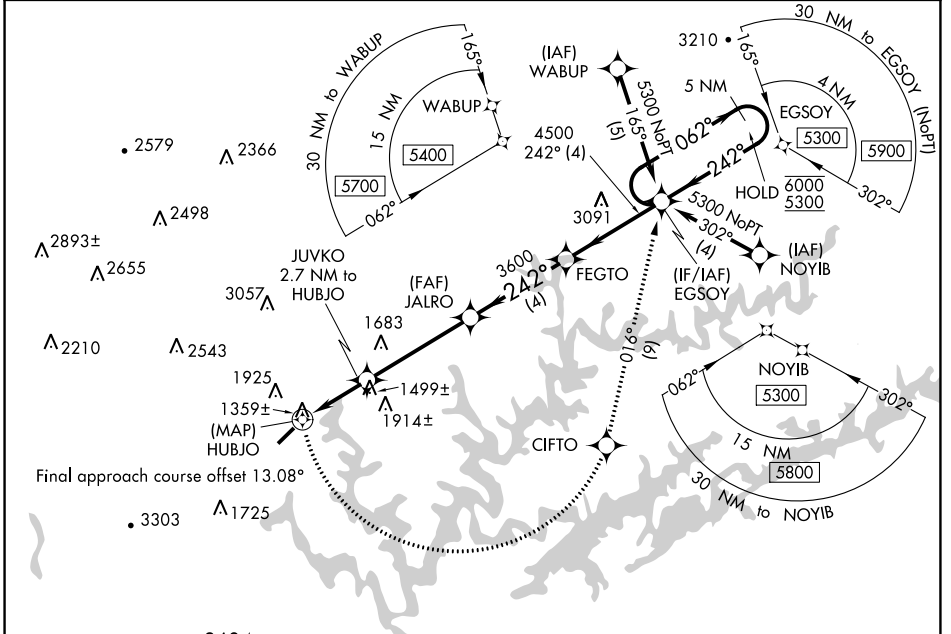
WAAS CH <b>77736</b> <b>W23A</b>	APP CRS <b>242°</b>	Rwy Idg TDZE Apt Elev	<b>4000</b> <b>1180</b> <b>1180</b>
--	------------------------	-----------------------------	---

**RNAV (GPS) RWY 23**  
COLONEL TOMMY C STINER AIRFIELD (JAU)

RNP APCH. MISSED APPROACH: Climbing left turn to 5300 direct CIFTO and on track 016° to EGSOY and hold, continue climb-in-hold to 5300.

▼ Circling NA northwest of Rwy 5-23.  
Rwy 23 helicopter visibility reduction below 3/4 SM NA.

AWOS-3 <b>124.975</b>	ATLANTA CENTER <b>133.6 254.3</b>	UNICOM <b>122.8 (CTAF) 0</b>
--------------------------	--------------------------------------	---------------------------------

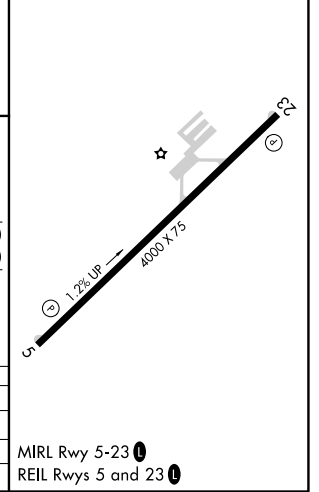


SE-1, 31 DEC 2020 to 28 JAN 2021

SE-1, 31 DEC 2020 to 28 JAN 2021

ELEV 1180	TDZE 1180
-----------	-----------

5300	CIFTO	tr 016°	EGSOY	Visual Segment - Obstacles.
<p>JUVKO 2.7 NM to HUBJO</p> <p>JALRO</p> <p>FEGTO</p> <p>EGSOY</p> <p>5 NM Holding Pattern</p> <p>Altitudes: 6000, 5300, 4500, 3600, 2220</p> <p>Angles: 242°, 062°</p>				
<p>0.5 1.4 1.3 4.3 NM 4 NM</p>				
CATEGORY	A	B	C	D
LP MDA	1640-1	460 (500-1)		NA
LNVA MDA	1920-1	740 (800-1)		NA
<b>C</b> CIRCLING	1920-1	740 (800-1)		NA



MIRL Rwy 5-23 0  
REIL Rwy 5 and 23 0