

| | | | |
|--|------------------------|-----------------------------|---|
| WAAS CH 99725 W34A | APP CRS 335° | Rwy Idg TDZE Apt Elev | 5310 665 689 |
|--|------------------------|-----------------------------|---|

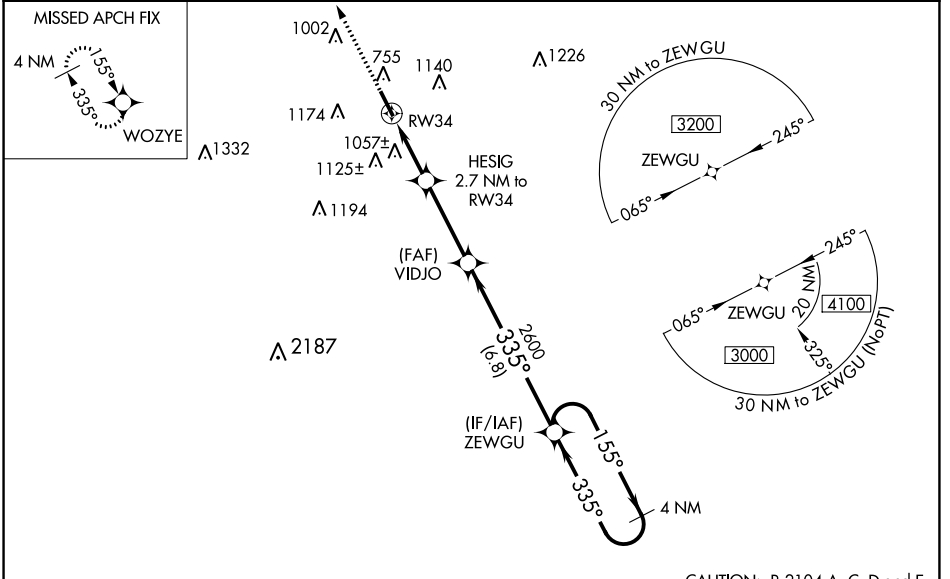
RNAV (GPS) RWY 34

ABERNATHY FIELD (GZS)

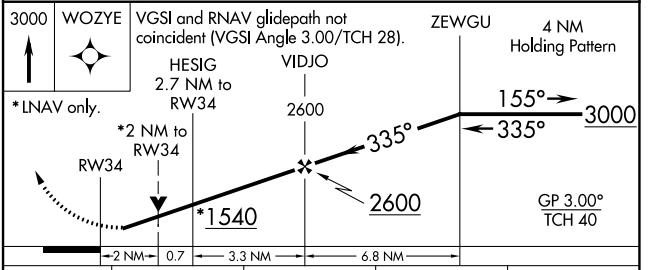
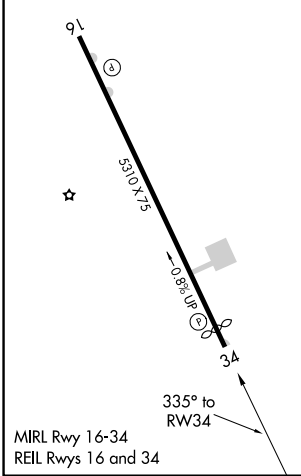
▼ Baro-VNAV NA when using Huntsville Executive Airport Tom Sharp Jr Field altimeter setting. For uncompensated Baro-VNAV systems, LNAV/VNAV NA below -1.6°C (4°F) or above 39°C (102°F).
▲ NA Night landing: Rwy 16 NA. DME/DME RNP-0.3 NA. Helicopter visibility reduction below 3/4 SM NA. When local altimeter setting not received, use Huntsville Executive Airport Tom Sharp Jr Field altimeter setting and increase all DA/MDA 80 feet; increase LPV all Cats and LNAV Cats C and D visibility 1/8 mile; increase LNAV/VNAV all Cats visibility 1/4 mile; increase Circling Cat C 1/2 mile and Cat D 1/4 mile. VDP NA with Huntsville Executive Airport Tom Sharp Jr Field altimeter setting.

MISSED APPROACH: Climb to 3000 direct WOZYE and hold.

| | | |
|--------------------------|--|-------------------------------|
| AWOS-3 118.275 | MEMPHIS CENTER 125.85 379.25 | UNICOM 122.8 (CTAF) |
|--------------------------|--|-------------------------------|



| | |
|-----------------|-----------------|
| ELEV 689 | TDZE 665 |
|-----------------|-----------------|



| CATEGORY | A | B | C | D |
|--------------|---|-------------|------------------------------------|--|
| LPV DA | 915-1 250 (300-1) | | | |
| LNAV/VNAV DA | 1443-2 ³ / ₄ 778 (800-2 ³ / ₄) | | | |
| LNAV MDA | 1320-1 | 655 (700-1) | 1320-1 ⁷ / ₈ | 655 (700-1 ⁷ / ₈) |
| CIRCLING | 1400-1 | 711 (800-1) | 1420-2 731 (800-2) | 1480-2 ¹ / ₂ 791 (800-2 ¹ / ₂) |

SE-1, 31 DEC 2020 to 28 JAN 2021

SE-1, 31 DEC 2020 to 28 JAN 2021

CAUTION: R-2104 A, C, D and E approximately 21 NM southeast of ZEWGU WP.