

WAAS CH 86608 W35A	APP CRS 345°	Rwy Idg TDZE Apt Elev	5002 610 610
--	------------------------	-----------------------------	---

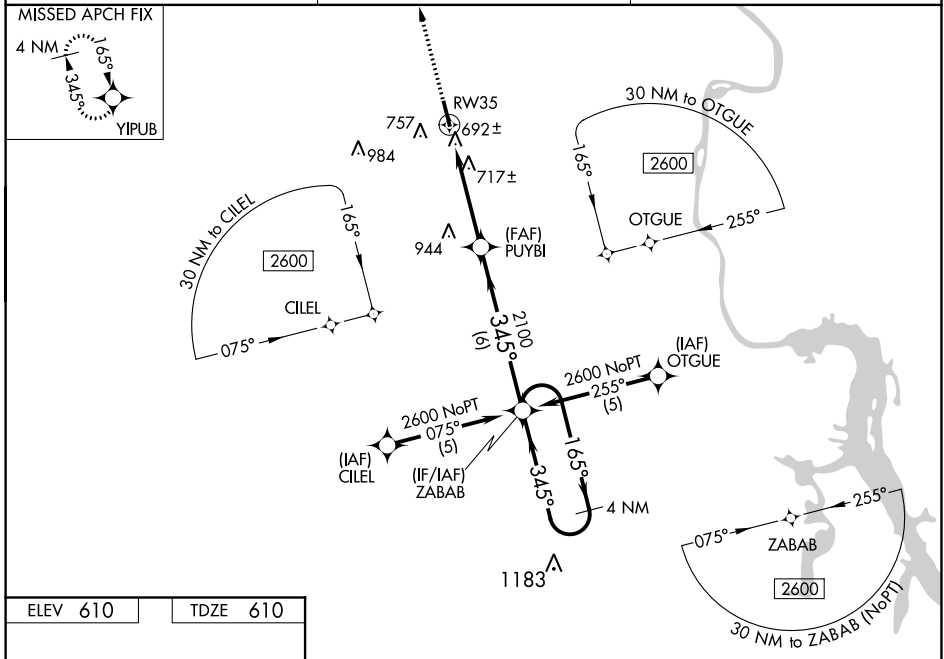
RNAV (GPS) RWY 35

ROBERT SIBLEY (SZY)

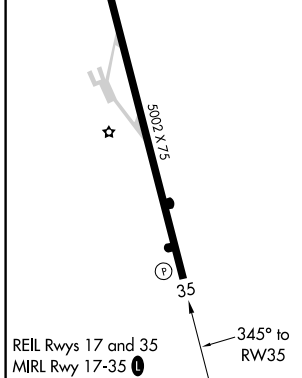
NA Baro-VNAV NA when using Mc Kellar-Sipes Rgnl altimeter setting. For uncompensated Baro-VNAV systems, LNAV/VNAV NA below -16°C (4°F) or above 47°C (116°F). DME/DME RNP-0.3 NA. Helicopter visibility reduction below 1 SM not authorized. When local altimeter setting not received, use Mc Kellar-Sipes Rgnl altimeter setting and increase all DA 97 feet and all MDA 100 feet, LPV all Cats and LNAV Cats C and D visibilities ¼ mile and LNAV/VNAV all Cats visibility ½ mile. Straight-in/Circling Rwy 35 procedure NA at night.

MISSED APPROACH:
Climb to 2600 direct YIPUB and hold.

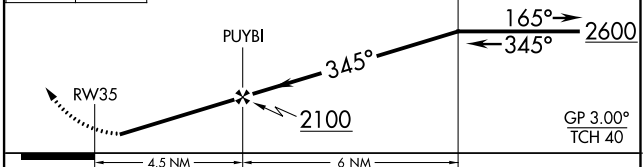
AWOS-3 118.425	MEMPHIS CENTER 124.35 239.3	UNICOM 122.7 (CTAF) 0
---------------------------------	--	--



ELEV 610	TDZE 610
----------	----------



2600 YIPUB VGSi and RNAV glidepath not coincident (VGSi Angle 4.00°/TCH 29). ZABAB 4 NM Holding Pattern



CATEGORY	A	B	C	D
LPV DA		944-1¼	334 (400-1¼)	
LNAV/VNAV DA		986-1¼	376 (400-1¼)	
LNAV MDA		980-1	370 (400-1)	980-1¼ 370 (400-1¼)
CIRCLING	1060-1 450 (500-1)	1080-1 470 (500-1)	1080-1½ 470 (500-1½)	1160-2 550 (600-2)

SE-1, 31 DEC 2020 to 28 JAN 2021

SE-1, 31 DEC 2020 to 28 JAN 2021