

APP CRS	Rwy Idg	5004
007°	TDZE	280
	Apt Elev	280

RNAV (GPS) RWY 1

COVINGTON MUNI (M04)

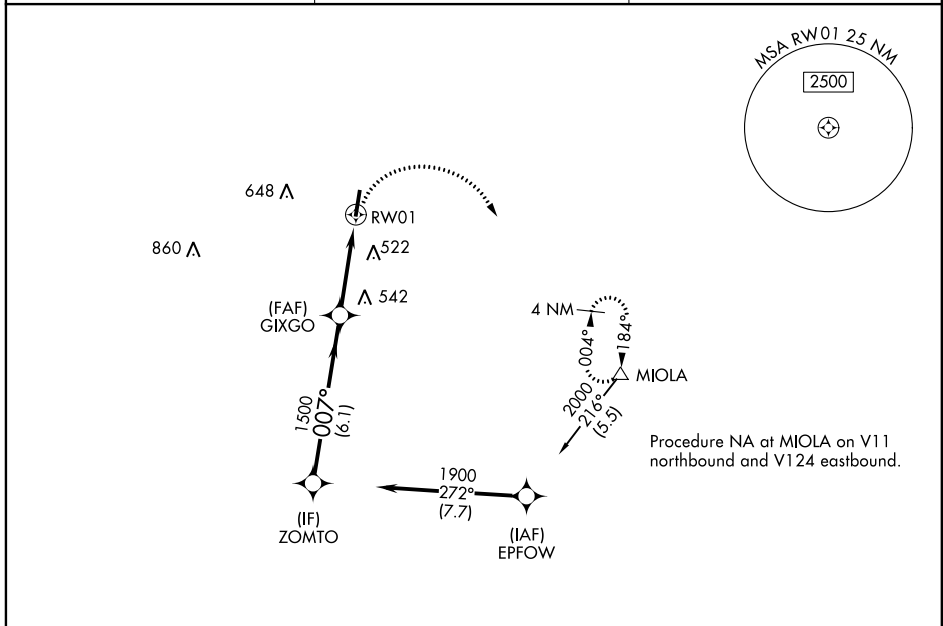
▽ DME/DME RNP-0.3 NA. Helicopter visibility reduction below 3/4 SM NA.
▲ When local altimeter setting not received, use Memphis Intl altimeter setting and increase LNAV Cats C/D and Circling Cat C visibilities 1/4 mile.

MISSED APPROACH: Climbing right turn to 3000 direct MIOLA and hold.

AWOS-3
118.575

MEMPHIS APP CON
125.8 338.3

UNICOM
123.0 (CTAF) 0



Procedure NA at MIOLA on V11 northbound and V124 eastbound.



Procedure Turn NA

VGSI and descent angles not coincident (VGSI Angle 3.00/TCH 25).

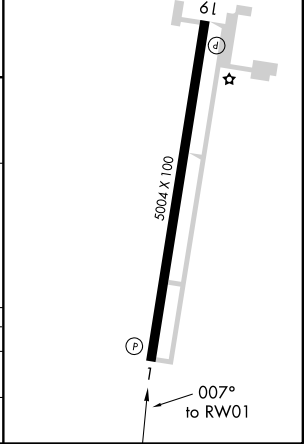
3000 MIOLA

	A	B	C	D
LNAV MDA	800-1	520 (600-1)	800-1½ 520 (600-1½)	800-1¾ 520 (600-1¾)
CIRCLING	800-1	520 (600-1)	800-1½ 520 (600-1½)	840-2 560 (600-2)

ELEV 280 TDZE 280

MIRL Rwy 1-19 0

REIL Rwy 1 and 19



SE-1, 31 DEC 2020 to 28 JAN 2021

SE-1, 31 DEC 2020 to 28 JAN 2021