

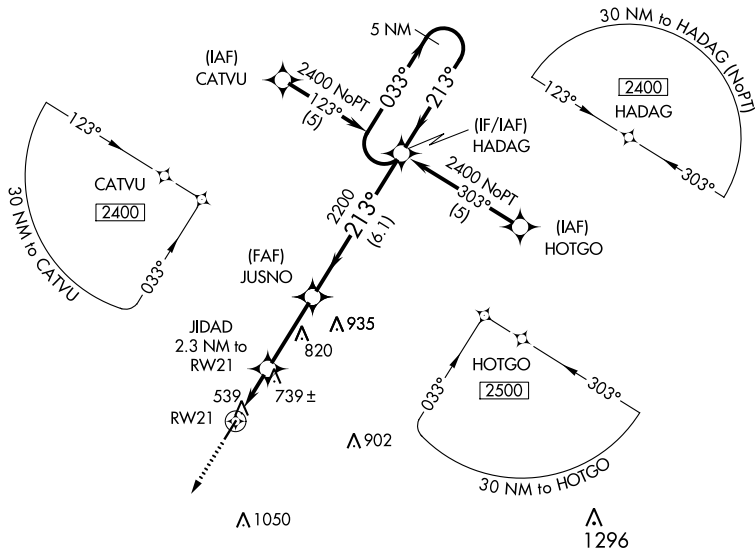
APP CRS	Rwy Idg	<b>4400</b>
<b>213°</b>	TDZE	<b>467</b>
	Apt Elev	<b>467</b>

# RNAV (GPS) RWY 21

RIPLEY (25M)

RNP APCH.		MISSED APPROACH: Climb to 2500 direct CEDAS and hold.
▼	Use Corinth altimeter setting; when not received, use Tupelo altimeter setting and increase all MDA 40 feet, and increase LNAV Cat C visibility 1/4 mile.	
▲ NA	Procedure NA at night. Rwy 21 helicopter visibility reduction below 1 SM NA.	

CRX AWOS-3PT <b>118.675</b>	MEMPHIS CENTER <b>135.9 260.6</b>	UNICOM <b>122.8 (CTAF) 0</b>
--------------------------------	--------------------------------------	---------------------------------



SC-4, 31 DEC 2020 to 28 JAN 2021

SC-4, 31 DEC 2020 to 28 JAN 2021

ELEV 467		TDZE 467	
CEDAS		213° to RW21	
2500	↑	5 NM Holding Pattern	
VGS1 and descent angles not coincident. (VGS1 Angle 3.50/TCH 16)		HADAG 2400 033° → ← 213°	
JIDAD 2.3 NM to RW21 RW21 1220 ≤ 3.04° TCH 40		JUSNO 2200 6.1 NM	
2.3 NM		2.9 NM	
CATEGORY	A	B	C
LNAV MDA	1060-1	593 (600-1)	1060-1½ 593 (600-1½)
			D
			NA

MIRL Rwy 3-21 0