

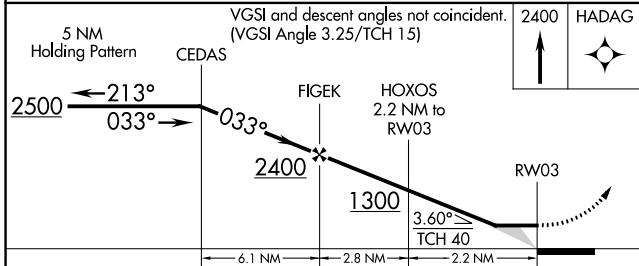
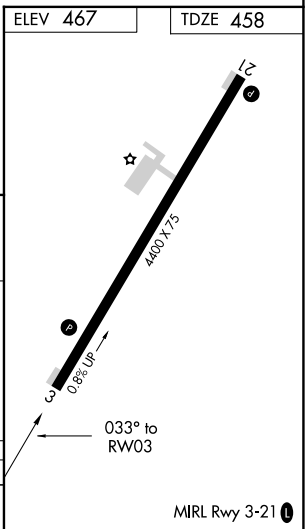
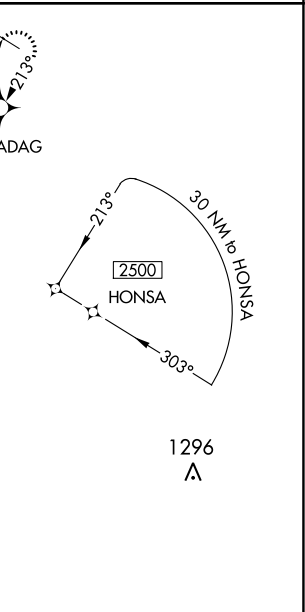
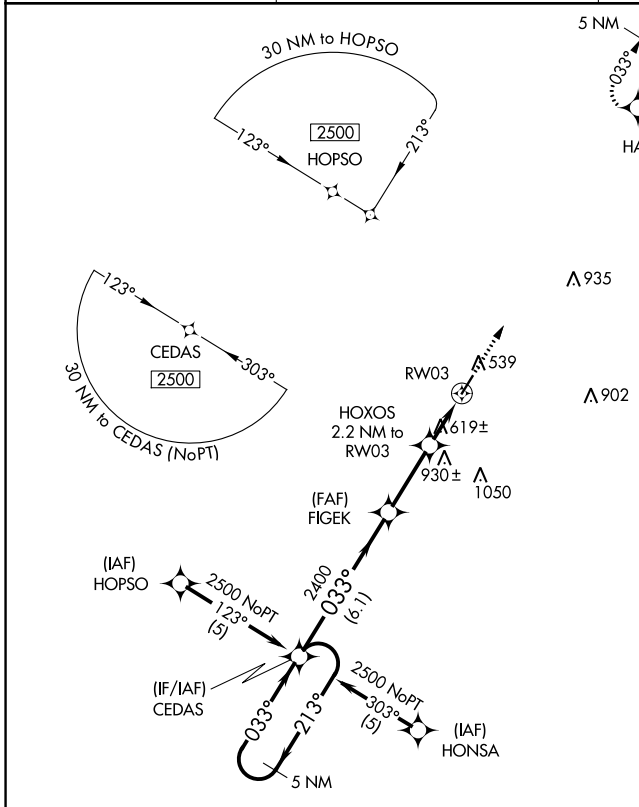
APP CRS	Rwy Idg	4400
033°	TDZE	458
	Apt Elev	467

RNAV (GPS) RWY 3

RIPLEY (25M)

RNP APCH.	Use Corinth altimeter setting, when not received use Tupelo altimeter setting and increase all MDA 40 feet, and increase LNAV Cat C visibility 1/4 mile. Procedure NA at night. Rwy 3 helicopter visibility reduction below 1 SM NA.	MISSED APPROACH: Climb to 2400 direct HADAG and hold.
-----------	--	---

CRX AWOS-3PT 118.675	MEMPHIS CENTER 135.9 260.6	UNICOM 122.8 (CTAF) 0
--------------------------------	--------------------------------------	---------------------------------



CATEGORY	A	B	C	D
LNAV MDA	940-1	482 (500-1)	940-1 1/4 482 (500-1 1/4)	NA

SC-4, 31 DEC 2020 to 28 JAN 2021

SC-4, 31 DEC 2020 to 28 JAN 2021