

RIPLEY, MISSISSIPPI

AL-6339 (FAA)

20254

VORTAC HLI 112.4 Chan 71	APP CRS 094°	Rwy Idg TDZE Apt Elev 467	N/A N/A 467
--	------------------------	---	--

VOR/DME-A

RIPLEY (25M)

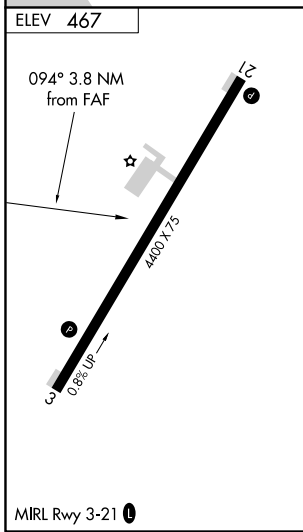
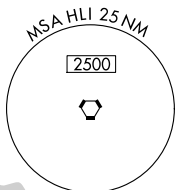
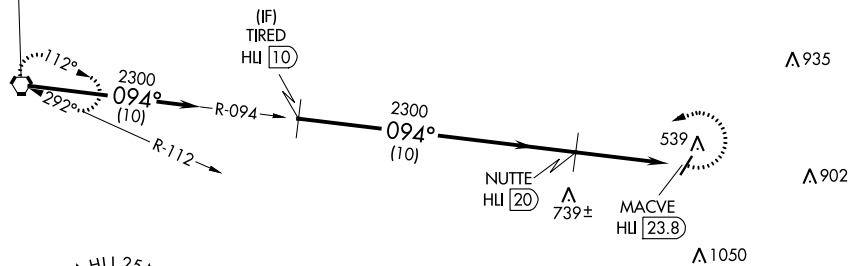
▼ Use Corinth altimeter setting; when not received, use Tupelo altimeter setting and increase all MDA 40 feet, and increase Cat D visibility ¼ mile.
▲ NA Procedure NA at night. Helicopter visibility reduction below 1 SM NA.

MISSED APPROACH: Climbing left turn to 3000 via heading 251° and HLI VORTAC R-094 to HLI VORTAC and hold.

CRX AWOS-3PT 118.675	MEMPHIS CENTER 135.9 260.6	UNICOM 122.8 (CTAF) 0
--------------------------------	--------------------------------------	---------------------------------

Procedure NA for arrivals on HLI VORTAC
 airway radials 045 CW 112.

IAF
HOLLY SPRINGS
 112.4 HLI [112.4]
 Chan 71



	HLI VORTAC	TIREH HLI [10]	NUTTE HLI [20]	MACVE HLI [23.8]
	2300	2300	2300	3000
	094°	094°	094°	hdg 251° HLI R-094
	10 NM	10 NM	3.8 NM	HLI
CATEGORY	A	B	C	D
CIRCLING	1060-1 593 (600-1)	1060-1¼ 593 (600-1¼)	1080-1¾ 613 (700-1¾)	1100-2 633 (700-2)

RIPLEY, MISSISSIPPI
 Amdt 2A 22AUG13

34°43'N-89°01'W

RIPLEY (25M)

VOR/DME-A

SC-4, 31 DEC 2020 to 28 JAN 2021

SC-4, 31 DEC 2020 to 28 JAN 2021