

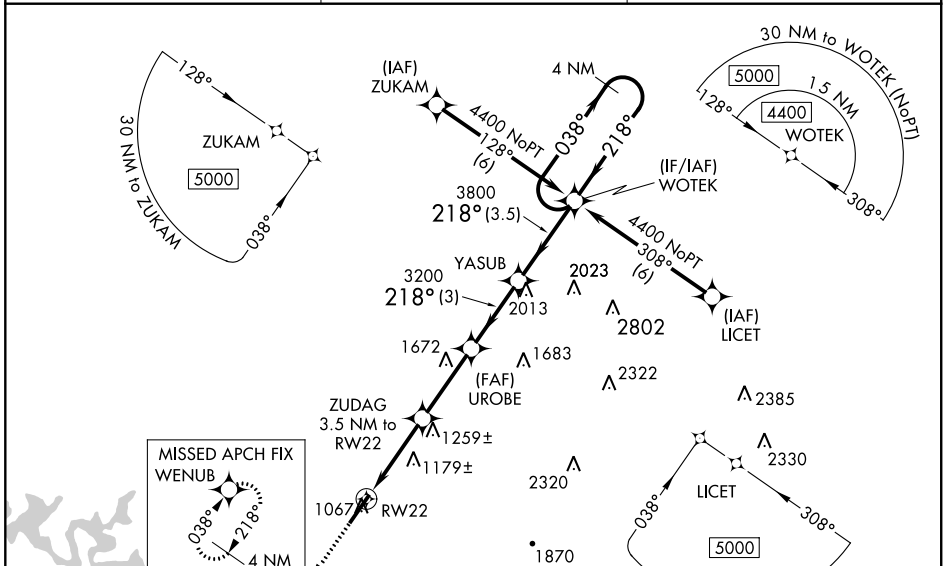
WAAS CH <b>82311</b> <b>W22A</b>	APP CRS <b>218°</b>	Rwy Idg TDZE Apt Elev	<b>6000</b> <b>1025</b> <b>1025</b>
--	------------------------	-----------------------------	---

**RNAV (GPS) RWY 22**  
UPPER CUMBERLAND RGNL (SR.B)

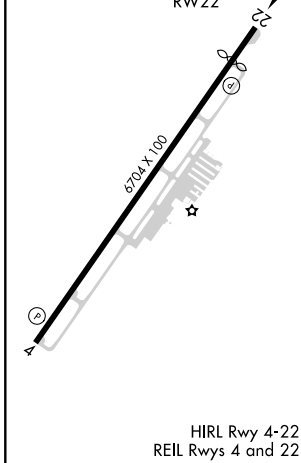
**⚠** Baro-VNAV NA when using Crossville altimeter setting. For uncompensated Baro-VNAV NA systems, LNAV/VNAV NA below -17°C (2°F) or above 54°C (130°F). DME/DME RNP-0.3 NA. When local altimeter setting not received, use Crossville altimeter setting and increase LPV DA to 1447, LNAV/VNAV DA to 1633. Increase LPV and LNAV/VNAV visibility ¾ mile. Increase all MDA 180 feet and LNAV Cat C visibility ¼ mile, Cat D ½ mile. Increase Circling Cat C/D visibility ¼ mile. VDP NA when using Crossville altimeter setting.

MISSED APPROACH: Climb to 4000 direct WENUB and hold.

AWOS-3 <b>128.25</b>	MEMPHIS CENTER <b>132.9 290.3</b>	UNICOM <b>122.975 (CTAF)</b>
-------------------------	--------------------------------------	---------------------------------



ELEV 1025	<b>D</b>	TDZE 1025
-----------	----------	-----------



4000	WENUB	VGSI and RNAV glidepath not coincident (VGSI Angle 3.00/TCH 25).	4 NM
			WOTEK Holding Pattern
*LNAV only	ZUDAG 3.5 NM to RW22	UROBE 3200	YASUB
	RW22	*1.2 NM to RW22	*2200
			3200
			3800
			218°
			038°
			4400
			GP 3.00°
			TCH 55
	1.2 NM	2.3 NM	3 NM
		3 NM	3.5 NM

CATEGORY	A	B	C	D
LPV DA		1275-¾	250 (300-¾)	
LNAV/VNAV DA		1461-1½	436 (500-1½)	
LNAV MDA	1440-1	415 (500-1)	1440-1¼	415 (500-1¼)
CIRCLING	1480-1	455 (500-1)	1480-1½	1580-2
			455 (500-1½)	555 (600-2)

SE-1, 31 DEC 2020 to 28 JAN 2021

SE-1, 31 DEC 2020 to 28 JAN 2021