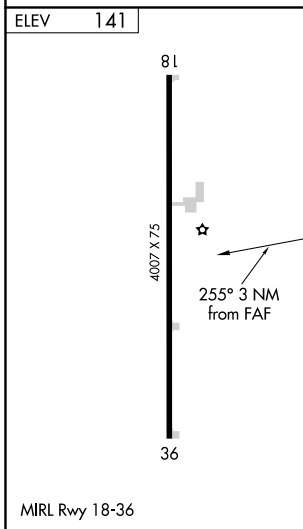
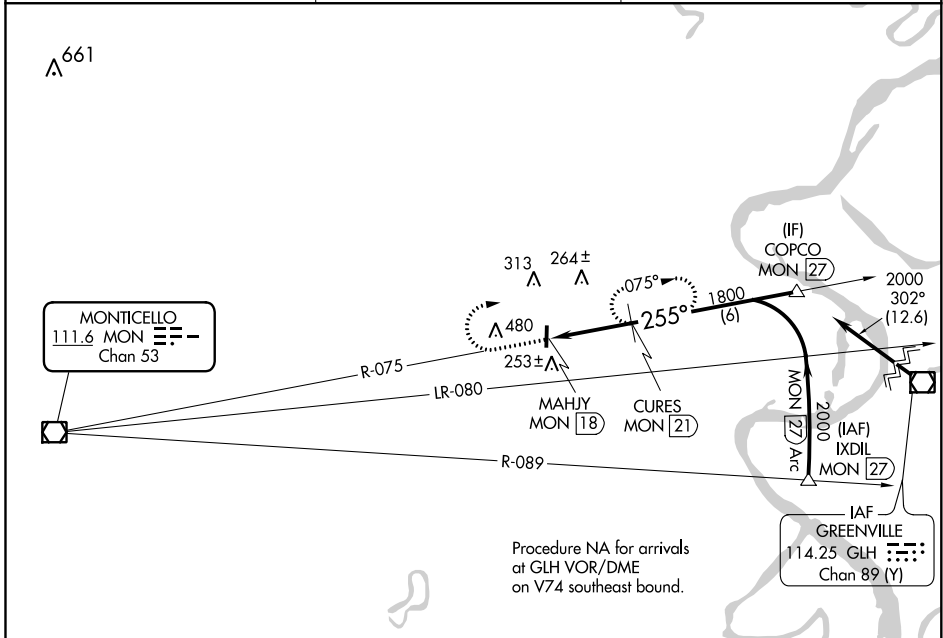


VOR/DME MON 111.6 Chan 53	APP CRS 255°	Rwy ldg TDZE Apt Elev N/A N/A 141
---	------------------------	---

VOR/DME-A
MC GEHEE MUNI (7M1)

∇ Circling NA West of Rwy 18-36. Use Greenville, MS altimeter setting; when not received use Monticello altimeter setting and increase all MDA 20 feet and increase Cat C visibility 1/4 mile. Procedure NA at night.
▲ NA MISSED APPROACH: Climb to 1000 then climbing right turn to 1800 on MON VOR/DME R-075 to CURES/MON 21 DME and hold.

GLH ASOS 125,525	MEMPHIS CENTER 135,875 269,35	CTAF 122.9
----------------------------	---	----------------------



	1000	1800	MON R-075	CURES MON 21	CURES MON 21	COPCO MON 27
			MAHJY MON 18			2000
						Procedure Turn NA
CATEGORY	A	B	C	D		
CIRCLING	800-1	659 (700-1)	800-1 3/4	659 (700-1 3/4)	NA	

SC-1, 31 DEC 2020 to 28 JAN 2021

SC-1, 31 DEC 2020 to 28 JAN 2021