

VOR/DME INA	APP CRS	Rwy Idg	<b>7000</b>
<b>108.2</b>	<b>146°</b>	TDZE	<b>4304</b>
Chan <b>19</b>		Apt Elev	<b>4308</b>

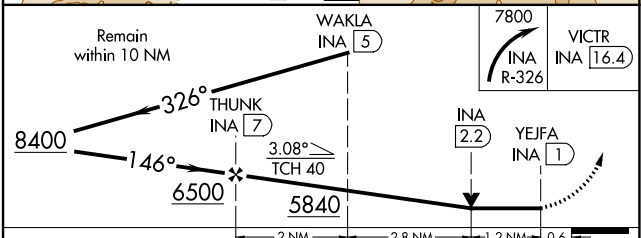
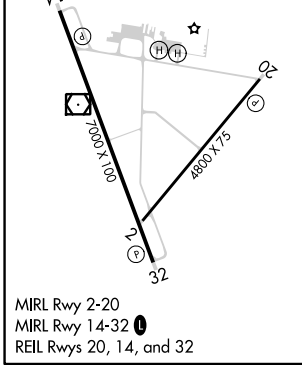
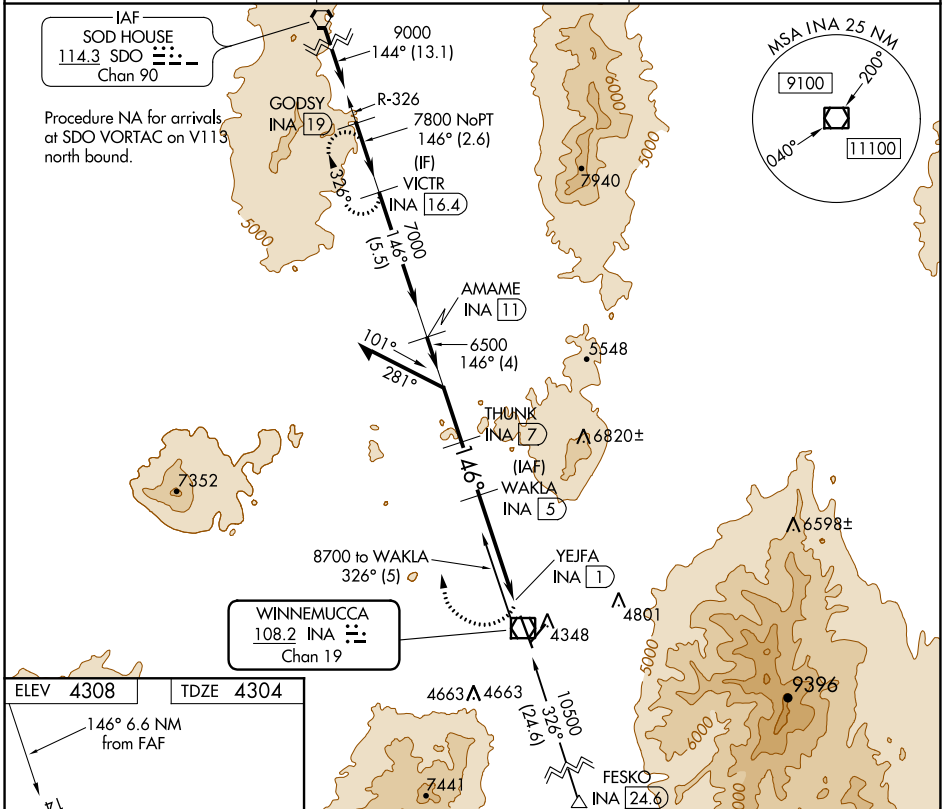
# VOR RWY 14

WINNEMUCCA MUNI (WMC)

DME required.

MISSED APPROACH: Climbing right turn to 7800 on INA VOR/DME R-326 to VICTR/INA 16.4 DME and hold.

ASOS <b>120.175</b>	SALT LAKE CITY CENTER <b>132.25 338.35</b>	UNICOM <b>122.8 (CTAF) 0</b>
------------------------	---	---------------------------------



CATEGORY	A	B	C	D
S-14	4940-1	636 (700-1)	4940-1 <sup>3</sup> / <sub>4</sub> 636 (700-1 <sup>3</sup> / <sub>4</sub> )	NA
<b>C</b> CIRCLING	4940-1	632 (700-1)	5280-3 972 (1000-3)	NA

SW-4, 31 DEC 2020 to 28 JAN 2021

SW-4, 31 DEC 2020 to 28 JAN 2021