

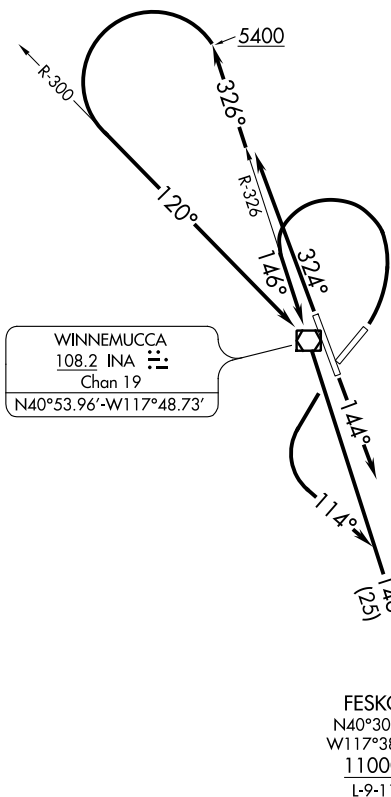
(INA1.INA) 20030

AL-6471 (FAA)

WINNEMUCCA MUNI (W/MC)
WINNEMUCCA, NEVADA

WINNEMUCCA ONE DEPARTURE (OBSTACLE)

ASOS
120.175
SALT LAKE CITY CENTER
132.25 338.35
RENO RADIO
122.3
CTAF
122.8



TAKEOFF MINIMUMS

- Rwy 32: Standard with minimum climb of 235' per NM to 11000 or 4900-3 for VCOA.
- Rwy 2: Standard with minimum climb of 500' per NM to 7800 or 4900-3 for VCOA.
- Rwy 14: Standard with minimum climb of 290' per NM to 11000 or 4900-3 for VCOA.
- Rwy 20: Standard with minimum climb of 425' per NM to 7800 or 4900-3 for VCOA.

WINNEMUCCA
108.2 INA
Chan 19
N40°53.96'-W117°48.73'

BATTLE MOUNTAIN
112.2 BAM
Chan 59

FESKO
N40°30.52'
W117°38.88'
11000
L-9-11

(NOTES CONTINUED ON FOLLOWING PAGE)

NOTE: Chart not to scale.

DEPARTURE ROUTE DESCRIPTION

TAKEOFF RUNWAY 2: Climbing left turn to intercept INA R-326 inbound to INA VOR/DME, thence. . . .

TAKEOFF RUNWAY 14: Climb on heading 144° to intercept INA VOR/DME R-146 outbound, thence. . . .

TAKEOFF RUNWAY 20: Climbing left turn heading 114° to intercept INA VOR/DME R-146 outbound, thence. . . .

TAKEOFF RUNWAY 32: Climb on heading 324° to intercept INA R-326 outbound to 5400 then climbing left turn to intercept INA R-300 inbound to INA VOR/DME, thence. . . .

. . . .all aircraft climb on the INA VOR/DME R-146 southeast bound to cross FESKO at or above 11000 before proceeding on assigned route of flight.

VCOA: Obtain ATC approval for VCOA when requesting IFR clearance. Climb in visual conditions to cross Winnemucca Muni Airport at or above 9100 before proceeding on course.

WINNEMUCCA ONE DEPARTURE (OBSTACLE)

(INA1.INA) 30JAN20

WINNEMUCCA, NEVADA
WINNEMUCCA MUNI (W/MC)

SW-4, 31 DEC 2020 to 28 JAN 2021

SW-4, 31 DEC 2020 to 28 JAN 2021