

WAAS CH 49224 W14A	APP CRS 136°	Rwy Idg TDZE Apt Elev	5322 5736 5737
--	------------------------	-----------------------------	---

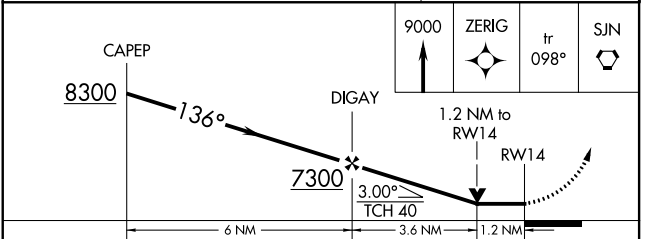
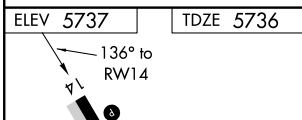
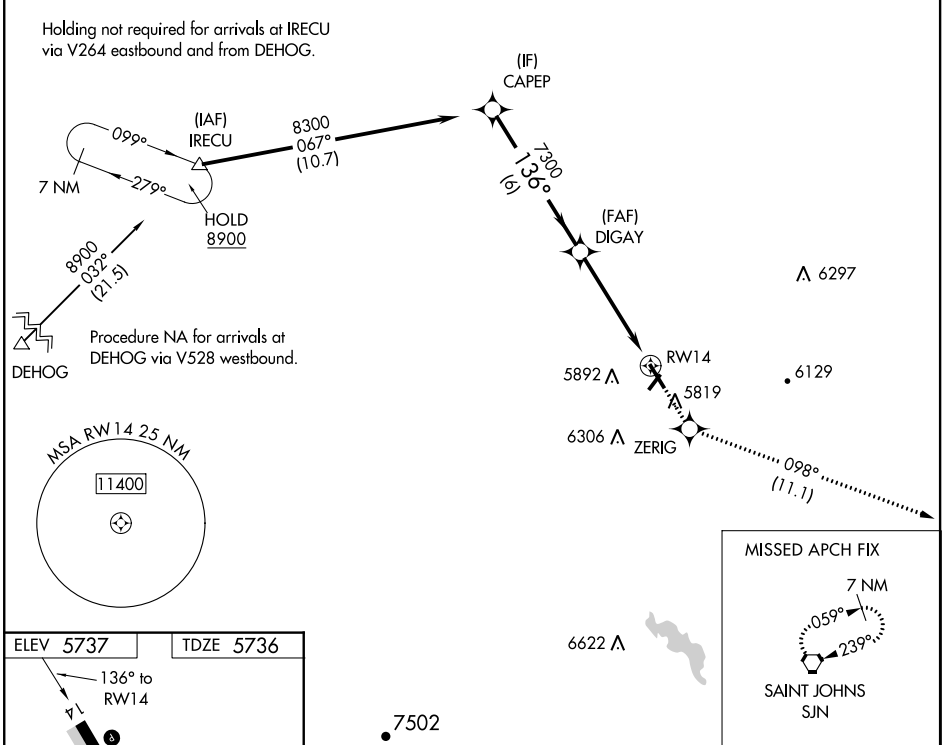
RNAV (GPS) RWY 14

ST JOHNS INDUSTRIAL AIR PARK (SJN)

⚠ Night landing Rwy 3, 32 NA. When local altimeter setting not received, use Show Low altimeter setting and increase all MDA 180 feet. DME/DME RNP-0.3 NA. Helicopter visibility reduction below 3/4 SM NA. VDP NA with Show Low altimeter setting.

MISSED APPROACH: Climb to 9000 direct ZERIG and on track 098° to SJN VORTAC and hold, continue climb-in-hold to 9000.

ASOS 134.225	ALBUQUERQUE CENTER 124.325 288.25	UNICOM 122.8 (CTAF) 0
------------------------	---	---------------------------------



CATEGORY	A	B	C	D
LP MDA	6140-1	404 (500-1)		NA
LNAV MDA	6140-1	404 (500-1)		NA
CIRCLING	6240-1 503 (600-1)	6280-1 543 (600-1)		NA

REIL Rws 14 and 32 **0**
MIRL Rws 3-21 and 14-32

SW-4, 31 DEC 2020 to 28 JAN 2021

SW-4, 31 DEC 2020 to 28 JAN 2021