

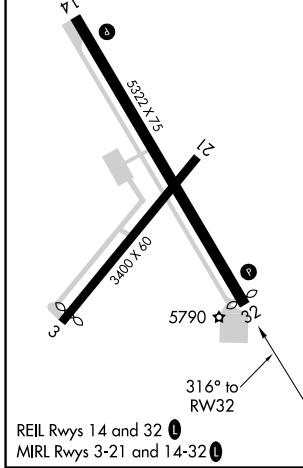
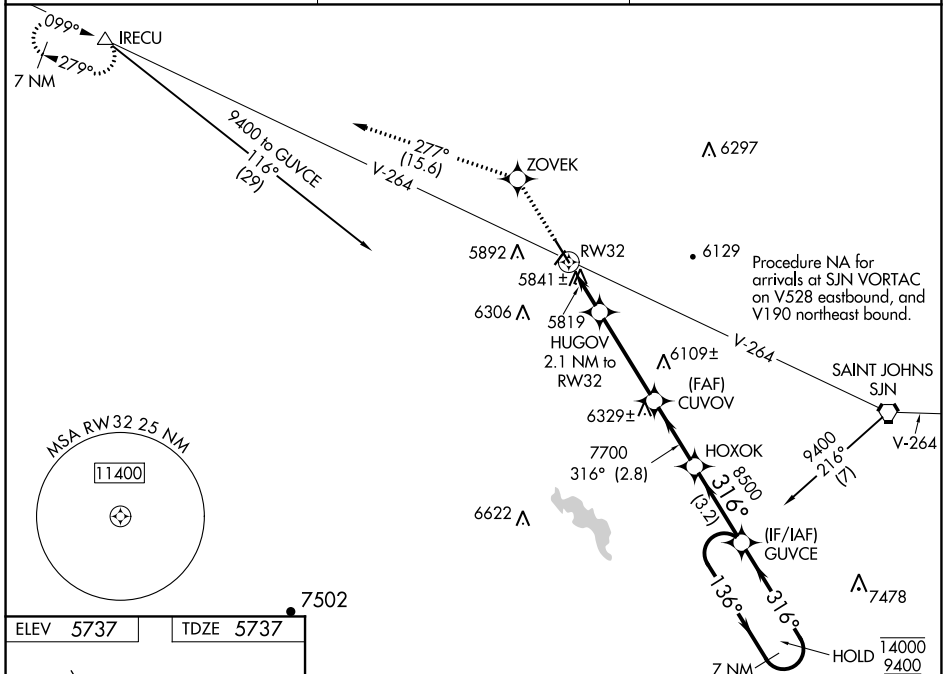
WAAS CH 42643 W32A	APP CRS 316°	Rwy ldg TDZE Apt Elev	5230 5737 5737
--	------------------------	-----------------------------	---

RNAV (GPS) RWY 32

ST JOHNS INDUSTRIAL AIR PARK (SJJN)

RNP APCH.	<p>▼ Rwy 32 helicopter visibility reduction below 1 SM NA. For uncompensated Baro-VNAV systems, LNAV/VNAV NA below -13°C or above 54°C. Rwy 32 Straight-in NA at night. Circling Rwy 3, 32 NA at night.</p>	MISSED APPROACH: Climb to 9400 direct ZOVEK and on track 277° to IRECU and hold.
-----------	--	--

ASOS 134.225	ALBUQUERQUE CENTER 124.325 288.25	UNICOM 122.8 (CTAF) ①
------------------------	---	---------------------------------



ELEV 5737	TDZE 5737	<p>9400 ZOVEK tr 277° IRECU</p> <p>VGSI and descent angles not coincident (VGSI Angle 3.00/TCH 40).</p> <p>7 NM Holding Pattern</p>		
<p>*LNAV only</p> <p>HUGOV 2.1 NM to RW32</p> <p>CUVOV 7700</p> <p>HOXOK 8500</p> <p>IF/IAF GUVCE</p> <p>136° 316° 14000 9400</p> <p>GP 3.08° TCH 53</p>		<p>7 NM Holding Pattern</p>		
<p>2.1 NM 3.7 NM 2.8 NM 3.2 NM</p>				
CATEGORY	A	B	C	D
LPV DA	5987-1	250 (300-1)		NA
LNAV/VNAV DA	6167-1¼	430 (500-1¼)		NA
LNAV MDA	6140-1	403 (500-1)		NA
C CIRCLING	6260-1 523 (600-1)	6280-1 543 (600-1)		NA

SW-4, 31 DEC 2020 to 28 JAN 2021

SW-4, 31 DEC 2020 to 28 JAN 2021