

WAAS CH 72936 W01A	APP CRS 012°	Rwy Idg 6250 TDZE 456 Apt Elev 458
--	------------------------	---

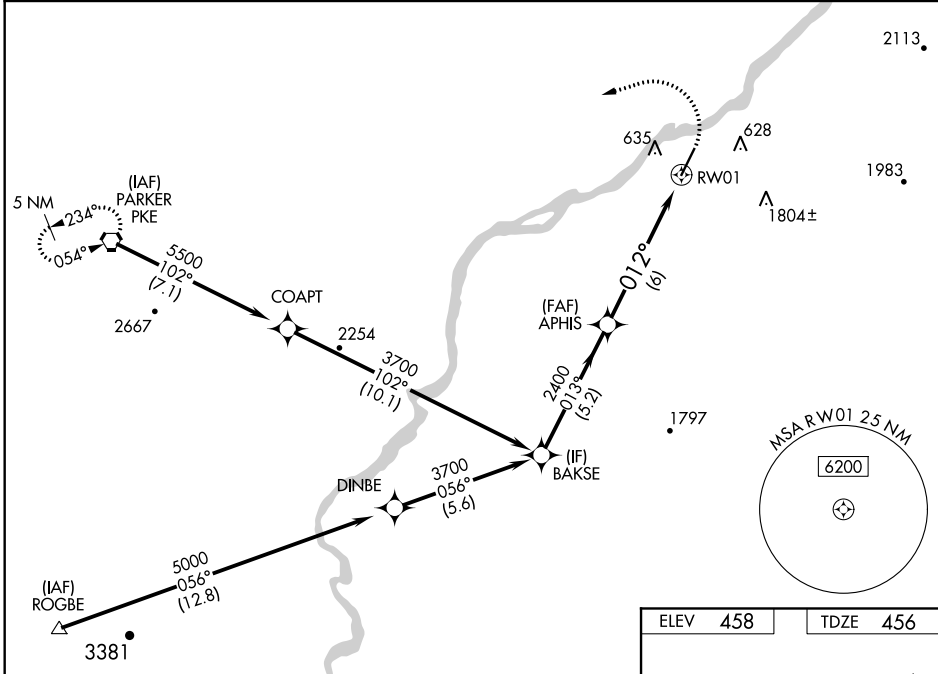
RNAV (GPS) RWY 1

AVI SUQUILLA (P2 \emptyset)

⚠ For uncompensated Baro-VNAV systems, LNAV/VNAV NA below -15°C (5°F) or above 54°C (130°F). DME/DME RNP-0.3 NA. Baro-VNAV and VDP NA when using Blythe altimeter setting. When local altimeter setting not received, use Blythe altimeter setting: increase all DA 98 feet and all MDA 100 feet; increase LPV all Cats and LNAV/VNAV all Cats visibility $\frac{3}{8}$ mile, and LNAV Cat C visibility $\frac{1}{4}$ mile.

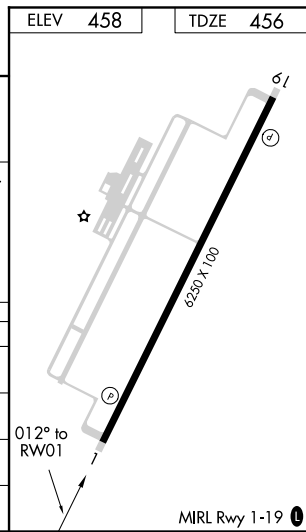
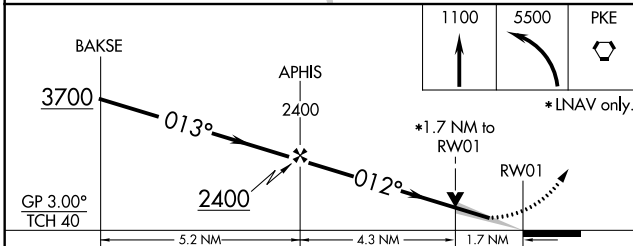
MISSED APPROACH: Climb to 1100 then climbing left turn to 5500 direct PKE VORTAC and hold, continue climb-in-hold to 5500.

AWOS-3PT 132.75	LOS ANGELES CENTER 128.15 285.6	UNICOM 122.725 (CTAF) \emptyset
---------------------------	---	---



SW-4, 31 DEC 2020 to 28 JAN 2021

SW-4, 31 DEC 2020 to 28 JAN 2021



CATEGORY	A	B	C	D
LPV DA		755-1 299 (300-1)		NA
LNAV/VNAV DA		770-1 314 (400-1)		NA
LNAV MDA	1020-1 564 (600-1)		1020-1 $\frac{1}{8}$ 564 (600-1 $\frac{1}{8}$)	NA
C CIRCLING	1060-1 602 (700-1)		1620-3 1162 (1200-3)	NA