

WAAS CH 57917 W01A	APP CRS 008°	Rwy Idg 5000 TDZE 969 Apt Elev 969
--	------------------------	---

RNAV (GPS) RWY 1

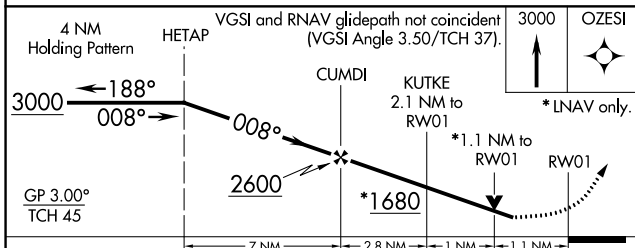
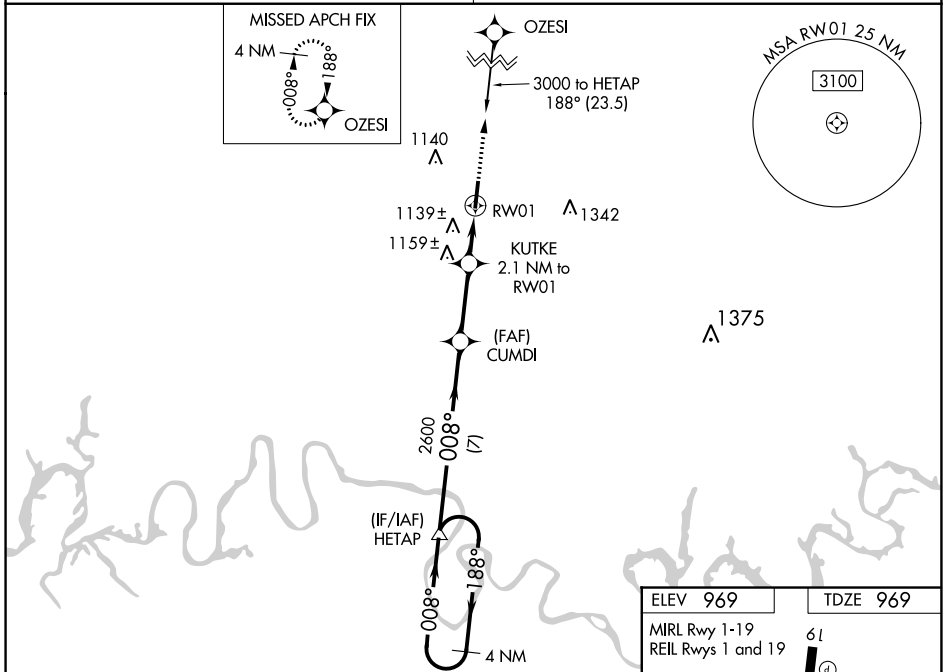
LAFAYETTE MUNI (3M7)

▽ For uncompensated Baro-VNAV systems, LNAV/VNAV NA below -16°C (4°F) or above 47°C (116°F). DME/DME RNP-0.3 NA. Visibility reduction by helicopters NA. Obtain local altimeter setting on CTAF; when not received, use Bowling Green altimeter setting and increase all DA 133 feet and all MDA 140 feet, increase LPV and LNAV/VNAV all Cats visibility ½ mile, LNAV Cat C and D visibility ¼ mile and Circling Cat C/D visibility ¼ mile. VDP and Baro-VNAV NA when using Bowling Green altimeter setting.

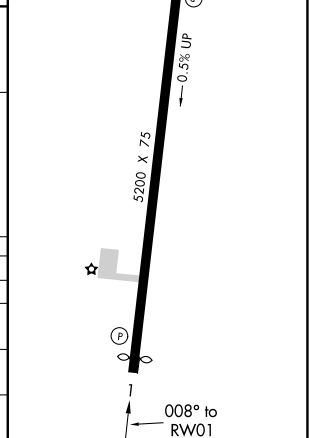
△ NA

MISSED APPROACH:
Climb to 3000 direct OZESI and hold.

NASHVILLE APP CON 118.4 360.7	UNICOM 122.8 (CTAF) 0
---	---------------------------------



ELEV 969	TDZE 969
MIRL Rwy 1-19	61
REIL Rws 1 and 19	0.5% UP



CATEGORY	A	B	C	D
LPV DA		1318-1¼	349 (400-1¼)	
LNAV/VNAV DA		1452-1¾	483 (500-1¾)	
LNAV MDA	1400-1	431 (500-1)	1400-1¼ 431 (500-1¼)	1400-1½ 431 (500-1½)
CIRCLING	1440-1	471 (500-1)	1440-1½ 471 (500-1½)	1520-2 551 (600-2)

SE-1, 31 DEC 2020 to 28 JAN 2021

SE-1, 31 DEC 2020 to 28 JAN 2021