

WAAS CH <b>61316</b> <b>W19A</b>	APP CRS <b>188°</b>	Rwy Idg TDZE Apt Elev	<b>5200</b> <b>961</b> <b>969</b>
--	------------------------	-----------------------------	---

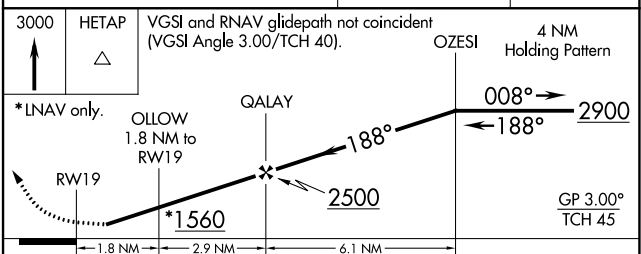
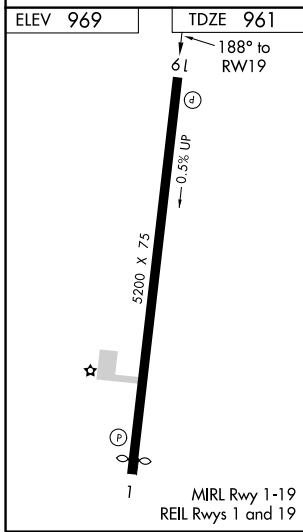
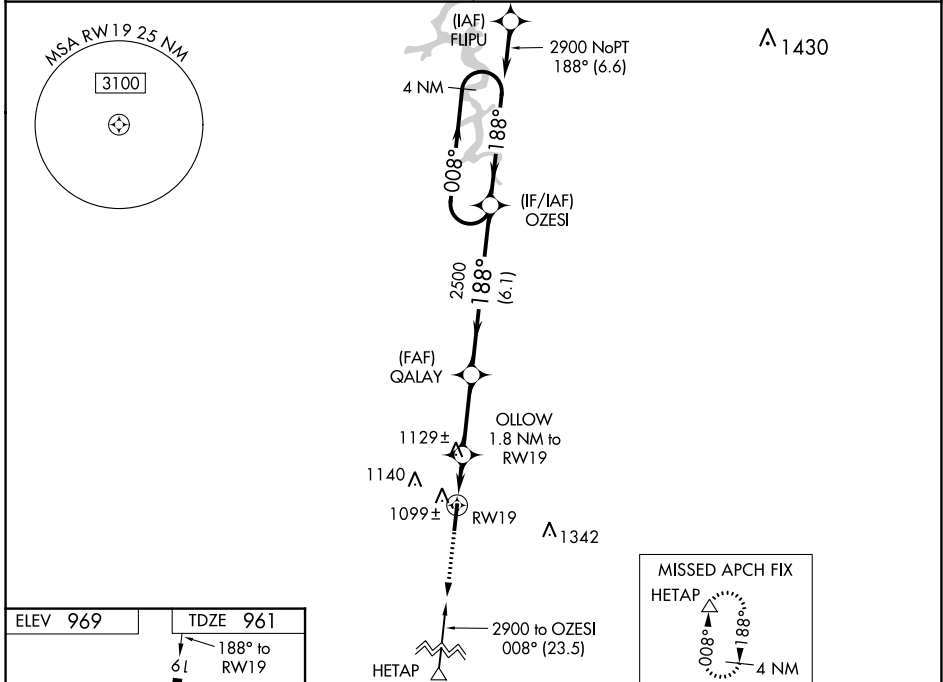
# RNAV (GPS) RWY 19

LAFAYETTE MUNI (3M7)

**NA** For uncompensated Baro-VNAV systems, LNAV/VNAV NA below -1.6°C (4°F) or above 46°C (114°F). DME/DME RNP-0.3 NA. Visibility reduction by helicopters NA. Obtain local altimeter setting on CTAF; when not received, use Bowling Green altimeter setting and increase all DA 133 feet and all MDA 140 feet, increase LPV and LNAV/VNAV all Cats visibility ½ mile, LNAV Cat C visibility ¼ mile, Cat D visibility ½ mile and Circling Cat C/D visibility ¼ mile.

**MISSED APPROACH:**  
Climb to 3000 direct HETAP and hold.

NASHVILLE APP CON **118.4 360.7** UNICOM **122.8 (CTAF)**



CATEGORY	A	B	C	D
LPV DA	1211-1		250 (300-1)	
LNAV/VNAV DA	1369-1½		408 (400-1½)	
LNAV MDA	1380-1	419 (500-1)	1380-1¼	419 (500-1¼)
CIRCLING	1440-1	471 (500-1)	1440-1½	1520-2 551 (600-2)

SE-1, 31 DEC 2020 to 28 JAN 2021

SE-1, 31 DEC 2020 to 28 JAN 2021