


VORTAC TFD 114.8 Chan 95	APP CRS 048°	Rwy Idg TDZE 1458 Apt Elev 1464
--	------------------------	---


VOR RWY 5

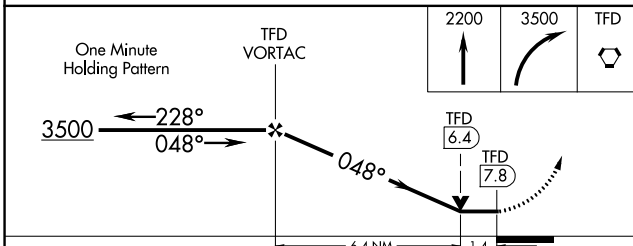
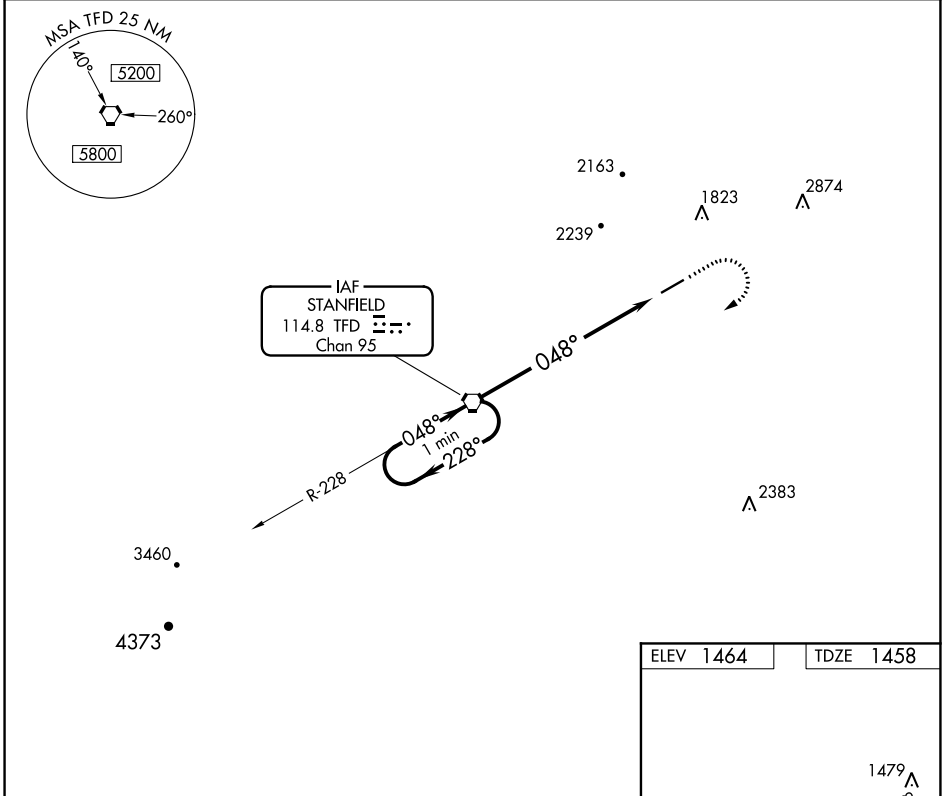
CASA GRANDE MUNI (CGZ)

▼ For inop ALS, increase S-5 Cats A/B visibility to 1 mile.
Rwy 5 helicopter visibility reduction below 3/4 SM NA.
Circling Rwy 23 NA at night.

MALSRL 


MISSED APPROACH: Climb to 2200, then climbing right turn to 3500 direct TFD VORTAC and hold.

AWOS-3PT 132.175	ALBUQUERQUE CENTER 125.4 269.3	UNICOM 122.7 (CTAF) 
----------------------------	--	---



ELEV 1464	TDZE 1458
-----------	-----------

MIRL Rwy 5-23					
FAF to MAP 7.8 NM					
Knots	60	90	120	150	180
Min:Sec	7:48	5:12	3:54	3:07	2:36

CATEGORY	A	B	C	D
S-5	1960-3/4	502 (500-3/4)	NA	
 CIRCLING	1960-1	496 (500-1)	NA	

SW-4, 31 DEC 2020 to 28 JAN 2021

SW-4, 31 DEC 2020 to 28 JAN 2021