

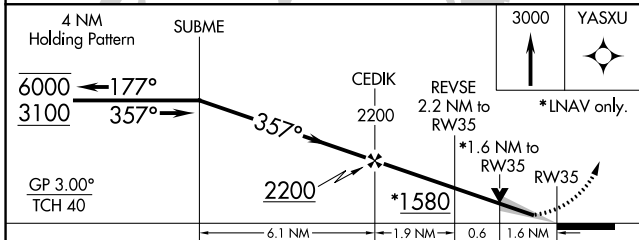
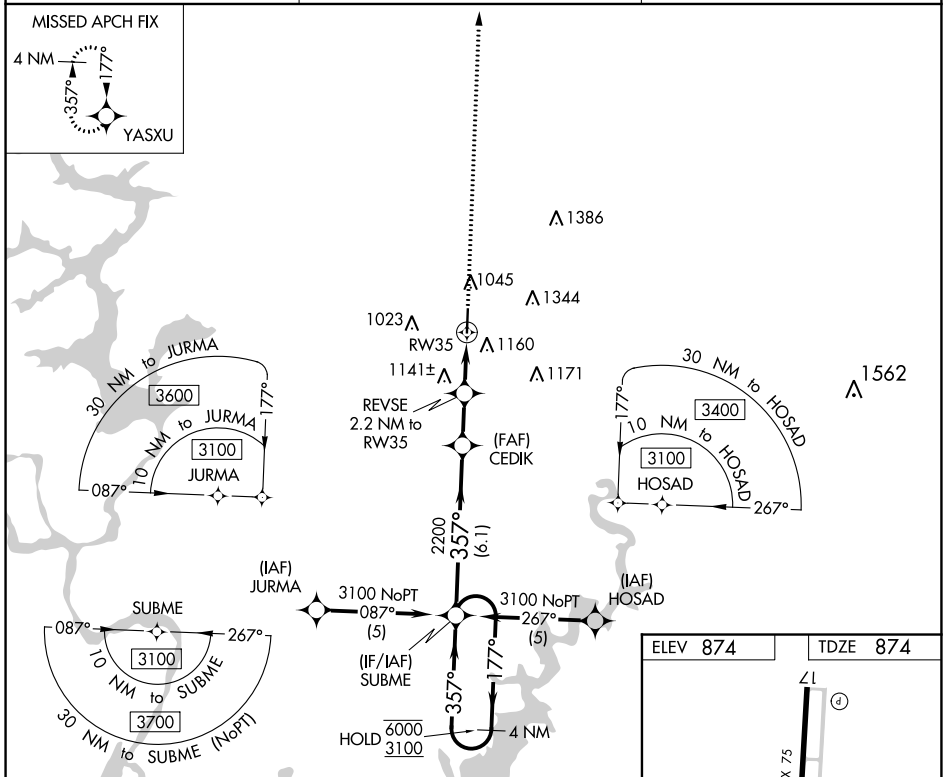
WAAS CH <b>90207</b> <b>W35A</b>	APP CRS <b>357°</b>	Rwy ldg <b>5001</b> TDZE <b>874</b> Apt Elev <b>874</b>
--	------------------------	---

# RNAV (GPS) RWY 35

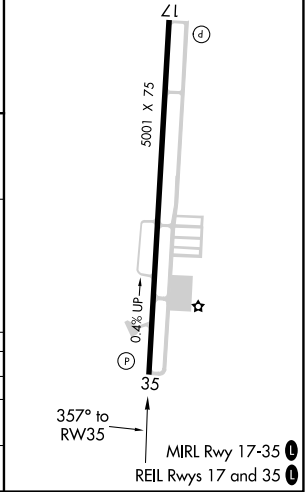
TAHLEQUAH MUNI (TQH)

RNP APCH.	MISSED APPROACH: Climb to 3000 direct YASXU and hold.
<p>▼ When local altimeter setting not received, use Muskogee altimeter setting and increase all MDAs 100 feet and increase LNAV Cat C visibility ¼ mile, Circling Cat B ¼ mile and Cat C ½ mile. VDP NA when using Muskogee altimeter setting.</p>	

AWOS-3P <b>118.425</b>	MEMPHIS CENTER <b>126.1 269.0</b>	UNICOM <b>122.8 (CTAF) 0</b>
---------------------------	--------------------------------------	---------------------------------



ELEV 874	TDZE 874
----------	----------



CATEGORY	A	B	C	D
LPV DA	1124-1 250 (300-1)			NA
LNAV MDA	1400-1	526 (600-1)	1400-1½ 526 (600-1½)	NA
CIRCLING	1520-1	646 (700-1)	1520-1¾ 646 (700-1¾)	NA

SC-1, 31 DEC 2020 to 28 JAN 2021

SC-1, 31 DEC 2020 to 28 JAN 2021