

LOC/DME I-JWN 110.3 Chan 40	APP CRS 198°	Rwy Idg TDZE Apt Elev	6001 501 501
--	------------------------	-----------------------------	---

ILS or LOC/DME RWY 20

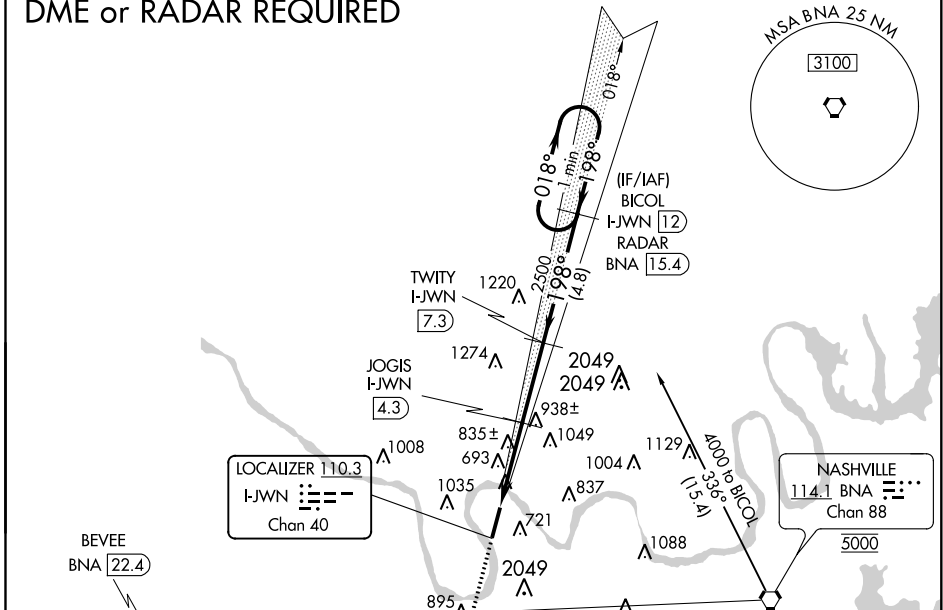
JOHN C TUNE (JWN)

⚠ NA When local altimeter setting not received, use Nashville Intl altimeter setting and increase all DA/MDA 40 feet; increase Circling Cat C visibility to 2 3/4 miles and Cat D visibility to 3 miles. Circling NA east of Rwy 2-20. VDP NA when using Nashville Intl altimeter setting. Helicopter visibility reduction below 3/4 SM NA. DME required.

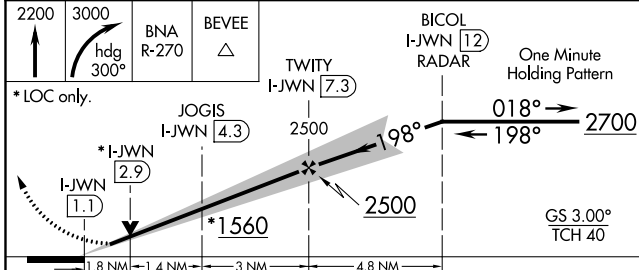
MISSED APPROACH: Climb to 2200 then climbing right turn to 3000 on heading 300° and BNA VORTAC R-270 to BEVEE/BNA 22.4 DME and hold.

AWOS-3 127.075	NASHVILLE APP CON 119.35 372.0	CLNC DEL 124.55	UNICOM 122.7 (CTAF)
--------------------------	--	---------------------------	-------------------------------

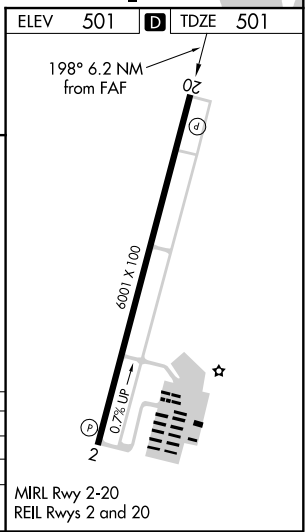
DME or RADAR REQUIRED



ELEV 501	D TDZE 501
----------	-------------------



CATEGORY	A	B	C	D
S-ILS 20	701-3/4 200 (200-3/4)			
S-LOC 20	1100-1	599 (600-1)	1100-1 3/4	599 (600-1 3/4)
C CIRCLING	1200-1	699 (700-1)	1340-2 1/2 839 (900-2 1/2)	1340-2 3/4 839 (900-2 3/4)



ILS or LOC/DME RWY 20

SE-1, 31 DEC 2020 to 28 JAN 2021

SE-1, 31 DEC 2020 to 28 JAN 2021