

WAAS CH <b>40231</b> <b>W30A</b>	APP CRS <b>304°</b>	Rwy Idg TDZE Apt Elev	<b>3601</b> <b>1748</b> <b>1748</b>
--	------------------------	-----------------------------	---

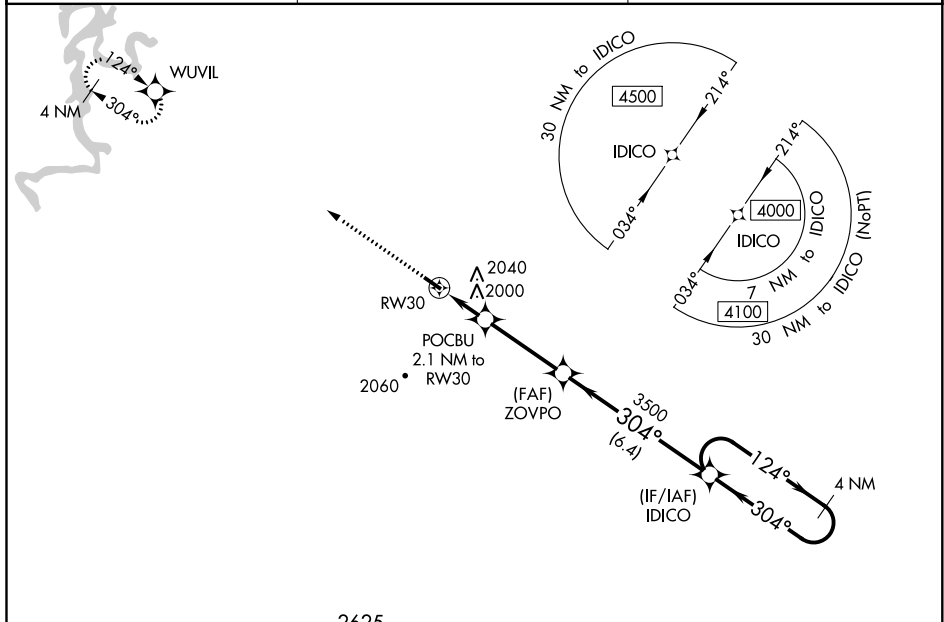
# RNAV (GPS) RWY 30

HUNTSVILLE MUNI (H34)

**NA** Baro-VNAV NA. DME/DME RNP-0.3 NA. Use Springdale altimeter setting; when not received, use Drake Field altimeter setting and increase all DA 18 feet and all MDA 20 feet; increase LNAV/VNAV all Cats visibility ¼ mile.

**MISSED APPROACH:** Climb to 4000 direct WUVIL and hold.

ASG AWOS-3 <b>124.675</b>	RAZORBACK APP CON ★ <b>126.6 305.2</b>	UNICOM <b>122.8 (CTAF) 0</b>
------------------------------	---	---------------------------------



ELEV 1748	TDZE 1748	△ 2625		
<p>4000 WUVIL</p> <p>*LNAV only</p> <p>POCBU 2.1 NM to RW30</p> <p>ZOVPO 3500</p> <p>IDICO 4 NM Holding Pattern</p> <p>RW30 2440</p> <p>3500</p> <p>4000</p> <p>GP 3.00° TCH 40</p> <p>2.1 NM 3.3 NM 6.4 NM</p>				
CATEGORY	A	B	C	D
LPV DA	2047-1 299 (300-1)			NA
LNAV/VNAV DA	2410-2¼ 662 (700-2¼)			NA
LNAV MDA	2360-1	612 (700-1)	2360-1¾ 612 (700-1¾)	NA
<input checked="" type="checkbox"/> CIRCLING	2360-1 612 (700-1)	2520-1 772 (800-1)	2520-2¼ 772 (800-2¼)	NA

SC-1, 31 DEC 2020 to 28 JAN 2021

SC-1, 31 DEC 2020 to 28 JAN 2021