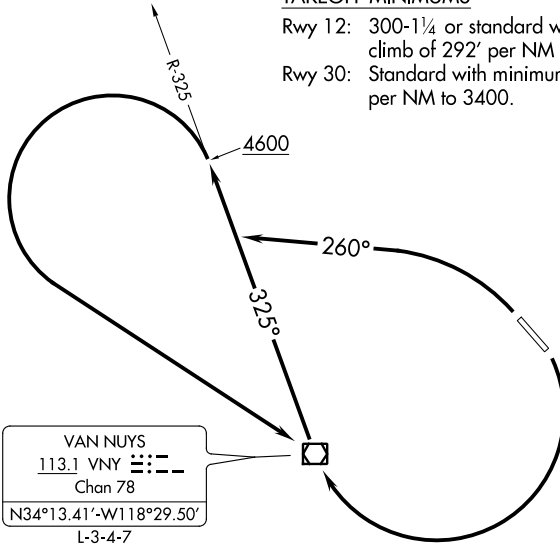


ATIS
132.1
GND CON
125.0
WHITEMAN TOWER ★
135.0 (CTAF)
SOCAL APP CON
120.4 360.6 (NORTH)
134.2 338.2 (WEST)
UNICOM
122.95

TAKEOFF MINIMUMS

Rwy 12: 300-1¼ or standard with minimum climb of 292' per NM to 1300.
Rwy 30: Standard with minimum climb of 366' per NM to 3400.



TAKEOFF OBSTACLE NOTES

- Rwy 12: Pole beginning 34' from DER, 276' right of centerline, up to 20' AGL/979' MSL.
Building 180' from DER, 9' left of centerline, 22' AGL/978' MSL.
Tower, pole beginning 489' from DER, 278' right of centerline, up to 60' AGL/1012' MSL.
Stack 1 NM from DER, 1131' left of centerline, 250' AGL/1183' MSL.
- Rwy 30: Pole 29' from DER, 277' left of centerline, 20' AGL/1024' MSL.
Pole 152' from DER, 282' left of centerline, 20' AGL/1025' MSL.
Pole 262' from DER, 282' left of centerline, 20' AGL/1027' MSL.
Pole 372' from DER, 283' left of centerline, 20' AGL/1028' MSL.
Pole beginning 482' from DER, 282' left of centerline, up to 20' AGL/1029' MSL.
Pole 703' from DER, 283' left of centerline, 20' AGL/1030' MSL.
Pole 812' from DER, 283' left of centerline, 20' AGL/1031' MSL.
Pole beginning 922' from DER, 283' left of centerline, up to 20' AGL/1032' MSL.
Pole 1141' from DER, 283' left of centerline, 20' AGL/1033' MSL.
Tower 1700' from DER, 511' right of centerline, 49' AGL/1075' MSL.
Tower 3532' from DER, 1118' right of centerline, 54' AGL/1098' MSL.

NOTE: Chart not to scale.

DEPARTURE ROUTE DESCRIPTION

TAKEOFF RUNWAY 12: Climbing right turn direct VNY VOR/DME, then on VNY R-325 to 4600, thence

TAKEOFF RUNWAY 30: Climbing left turn heading 260° and on VNY VOR/DME R-325 to 4600, thence

. . . . climbing left turn direct VNY VOR/DME to depart VNY VOR/DME at or above MEA for route of flight.