

NDB AZC 403	APP CRS 330°	Rwy Idg TDZE Apt Elev N/A N/A 4874
-----------------------	------------------------	--

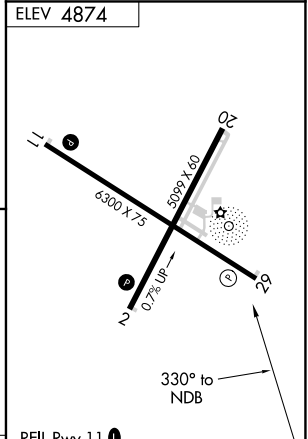
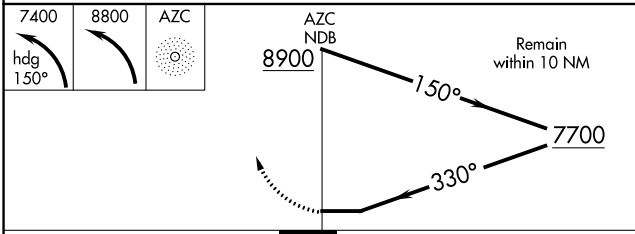
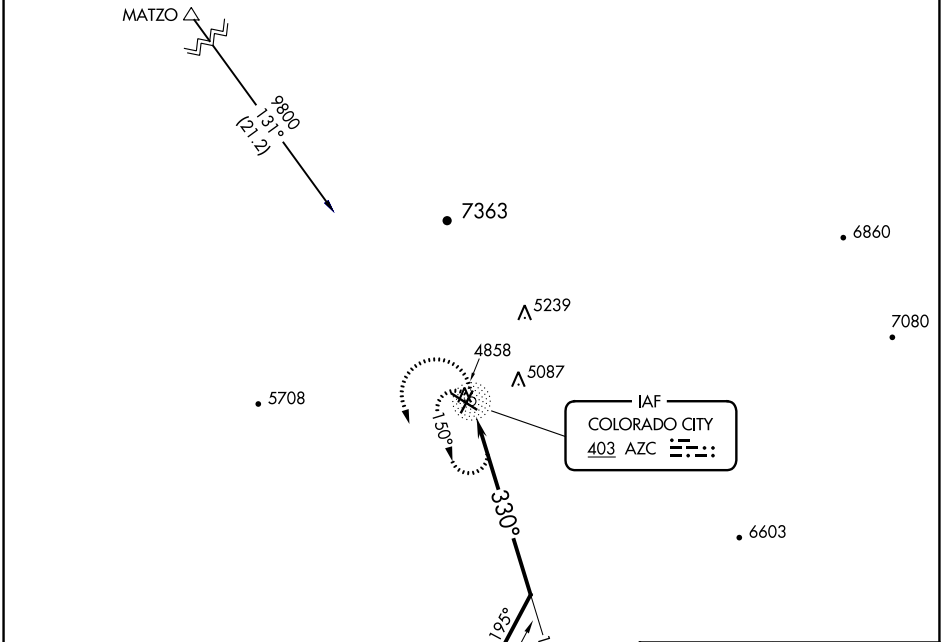
NDB-A

COLORADO CITY MUNI (AZC)

NA Circling NA for Cat D north of Rwy 11-29.

MISSED APPROACH: Climbing left turn to 7400 on heading 150° then climbing left turn to 8800 direct AZC NDB and hold, continue climb-in-hold to 8800.

AWOS-3PT 118.375	LOS ANGELES CENTER 124.2 343.6	UNICOM 122.7 (CTAF)
----------------------------	--	-------------------------------



CATEGORY	A	B	C	D
CIRCLING	6980-1¼ 2106 (2200-1¼)	6980-1½ 2106 (2200-1½)	6980-3	2106 (2200-3)

- REIL Rwy 11
- REIL Rwy 29
- MIRL Rwy 11-29
- MIRL Rwy 2-20

SW-4, 31 DEC 2020 to 28 JAN 2021

SW-4, 31 DEC 2020 to 28 JAN 2021