

WAAS CH 86440 W11A	APP CRS 109°	Rwy Idg TDZE Apt Elev	6300 4854 4874
--	------------------------	-----------------------------	---

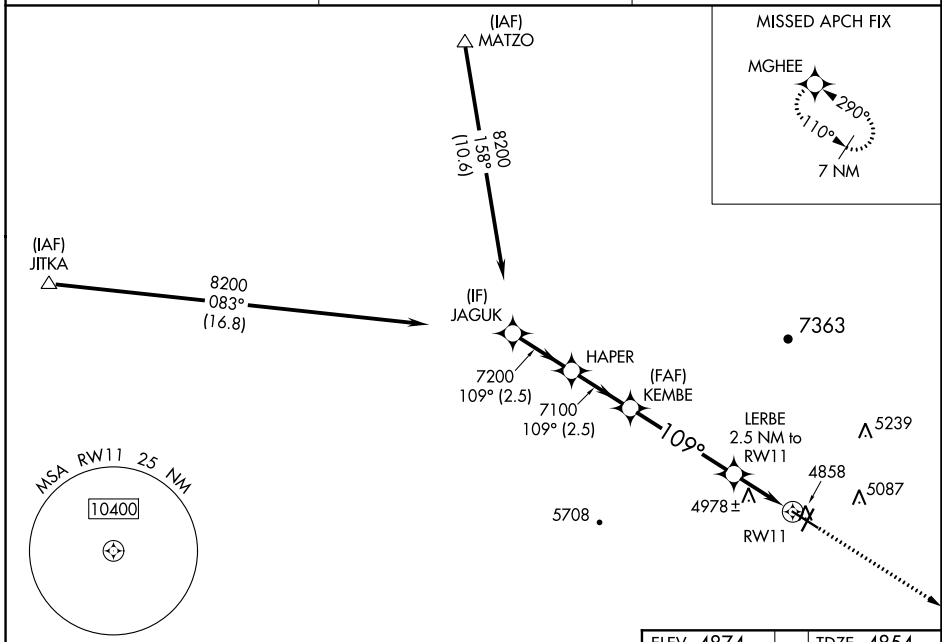
RNAV (GPS) RWY 11

COLORADO CITY MUNI (AZC)

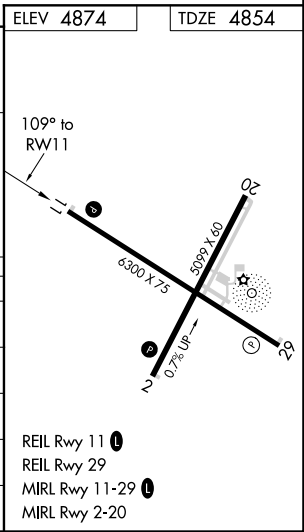
⚠ For uncompensated Baro-VNAV systems, LNAV/VNAV NA below -24°C (-11°F) or above 51°C (125°F). Circling NA for Cat D north of Rwy 11-29. DME/DME RNP-0.3 NA.

MISSED APPROACH: Climb to 9100 direct MGHEE and hold, continue climb-in-hold to 9100.
#Missed approach requires minimum climb of 240 feet per NM to 7500.

AWOS-3PT 118.375	LOS ANGELES CENTER 124.2 343.6	UNICOM 122.7 (CTAF) 0
----------------------------	--	---------------------------------



JAGUK		HAPER		KEMBE		LERBE		MGHEE	
8200		7200		7100		5680		9100	
GP 3.00° TCH 53		7100		*1.9 NM to RWY 11		*LNAV only		*LNAV only	
2.5 NM		2.5 NM		4.4 NM		0.6 NM		1.9 NM	
CATEGORY	A	B		C		D			
LPV DA#	5104-1 250 (300-1)								
LPV DA	5297-1½ 443 (500-1½)								
LNAV/VNAV DA	5463-2½ 609 (600-2½)								
LNAV MDA	5500-1 646 (700-1)		5500-1⅞ 646 (700-1⅞)						
CIRCLING	5500-1 626 (700-1)		5520-1 646 (700-1)		6880-3 2006 (2100-3)				



- REIL Rwy 11 0
- REIL Rwy 29
- MIRL Rwy 11-29 0
- MIRL Rwy 2-20

SW-4, 31 DEC 2020 to 28 JAN 2021

SW-4, 31 DEC 2020 to 28 JAN 2021