

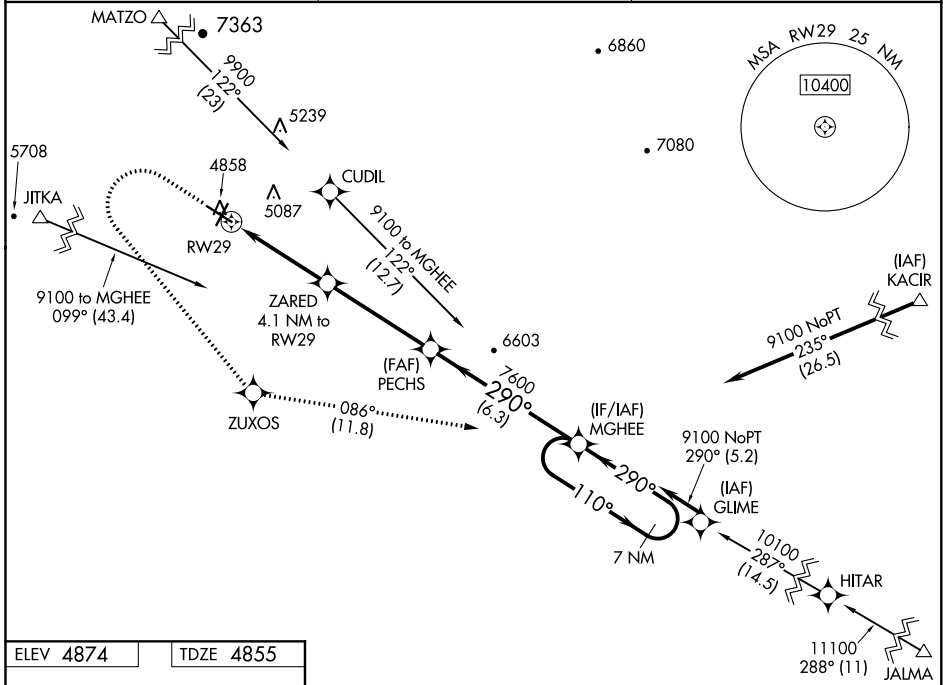
WAAS CH <b>72740</b> <b>W29A</b>	APP CRS <b>290°</b>	Rwy Idg TDZE Apt Elev	<b>6300</b> <b>4855</b> <b>4874</b>
--	------------------------	-----------------------------	---

# RNAV (GPS) RWY 29

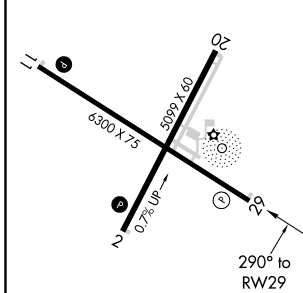
COLORADO CITY MUNI (AZC)

RNP APCH. ▼ ▲ Baro-VNAV NA. Circling NA for Cat D north of Rwy 11-29.	MISSED APPROACH: Climb to 6600 then climbing left turn to 9100 direct ZUXOS and track 086° to MGHEE and hold.
---	---

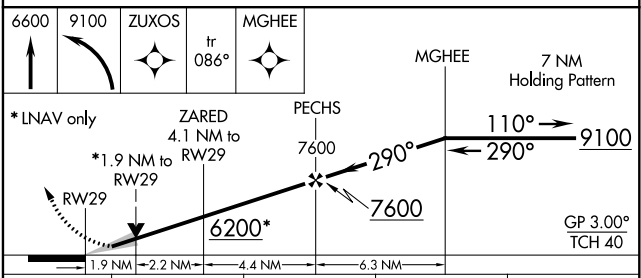
AWOS-3PT <b>118.375</b>	LOS ANGELES CENTER <b>124.2 343.6</b>	UNICOM <b>122.7 (CTAF)</b>
----------------------------	--	-------------------------------



ELEV 4874	TDZE 4855
-----------	-----------



- REIL Rwy 11
- REIL Rwy 29
- MIRL Rwy 11-29
- MIRL Rwy 2-20



CATEGORY	A	B	C	D
LPV DA		5105-1	250 (300-1)	
LNAV/VNAV DA		5157-1	302 (300-1)	
LNAV MDA	5500-1	645 (700-1)	5500-1 $\frac{7}{8}$	645 (700-1 $\frac{7}{8}$ )
<input checked="" type="checkbox"/> CIRCLING	5500-1 626 (700-1)	5520-1 646 (700-1)	6880-3	2006 (2100-3)

SW-4, 31 DEC 2020 to 28 JAN 2021

SW-4, 31 DEC 2020 to 28 JAN 2021