

WAAS CH <b>48929</b> W15A	APP CRS <b>148°</b>	Rwy Idg TDZE Apt Elev	<b>2997</b> <b>345</b> <b>345</b>
---------------------------------	------------------------	-----------------------------	---

# RNAV (GPS) RWY 15

OXFORD COUNTY RGNL (81B)

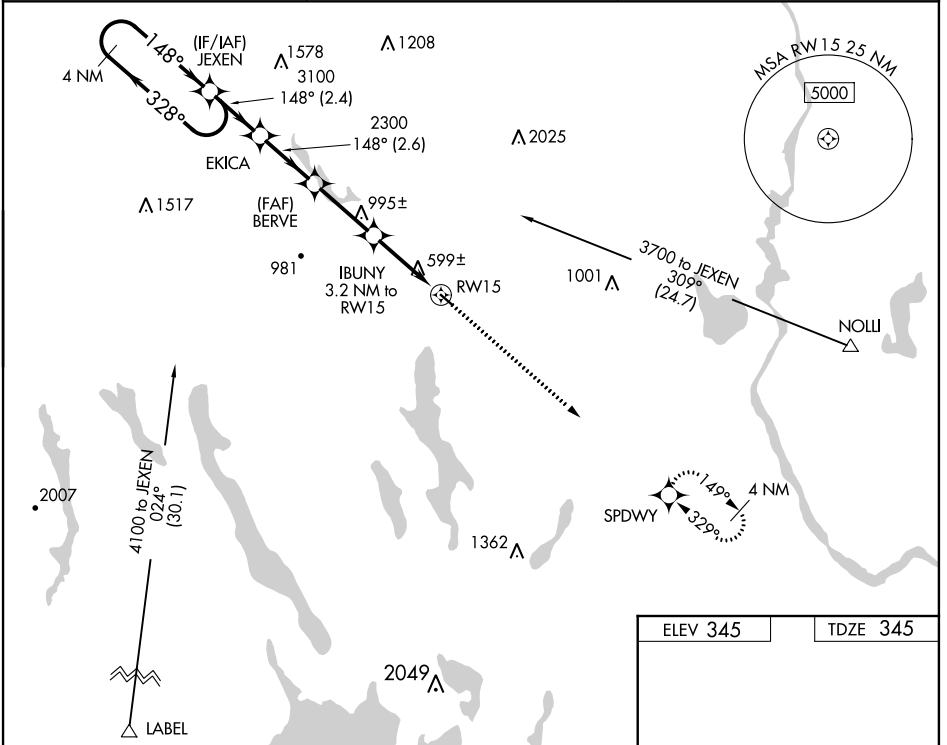
**NA** DME/DME RNP-0.3 NA. Procedure NA at night. Use Auburn/Lewiston altimeter setting; when not received, use Fryeburg altimeter setting and increase all MDA 40 feet, increase Circling Cat B visibility to 1½. Helicopter visibility reduction below 1 SM NA.

**MISSED APPROACH:** Climb to 3600 direct SPDWY and hold, continue climb-in-hold to 3600.

LEW AWOS-3  
**118.025**

PORTLAND APP CON ★  
**125.5 353.9**

UNICOM  
**122.8 (CTAF) 0**



NE-1, 31 DEC 2020 to 28 JAN 2021

NE-1, 31 DEC 2020 to 28 JAN 2021

4 NM Holding Pattern		Visual Segment - Obstacles.		3600	SPDWY
3700 ← 328°		→ 148°		↑	✧
JEXEN		EKICA	BERVE	IBUNY 3.2 NM to RW15	RW15
3100		2300	1400	→	
← 2.4 NM		← 2.6 NM	← 2.8 NM	← 3.2 NM	
CATEGORY	A	B	C	D	
LP MDA	900-1	555 (600-1)	NA		
LNVA MDA	1140-1 795 (800-1)	1140-1¼ 795 (800-1¼)	NA		
CIRCLING	1220-1¼ 875 (900-1¼)	1260-1¼ 915 (1000-1¼)	NA		

