

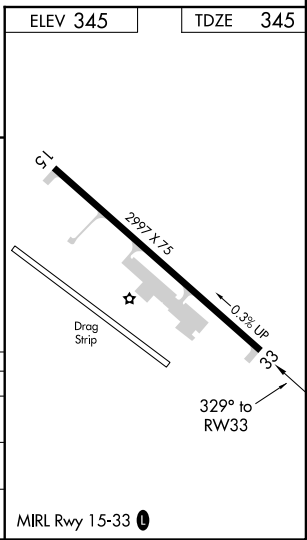
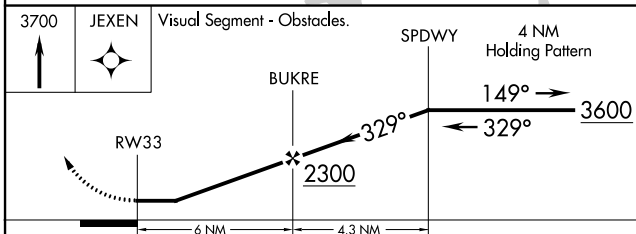
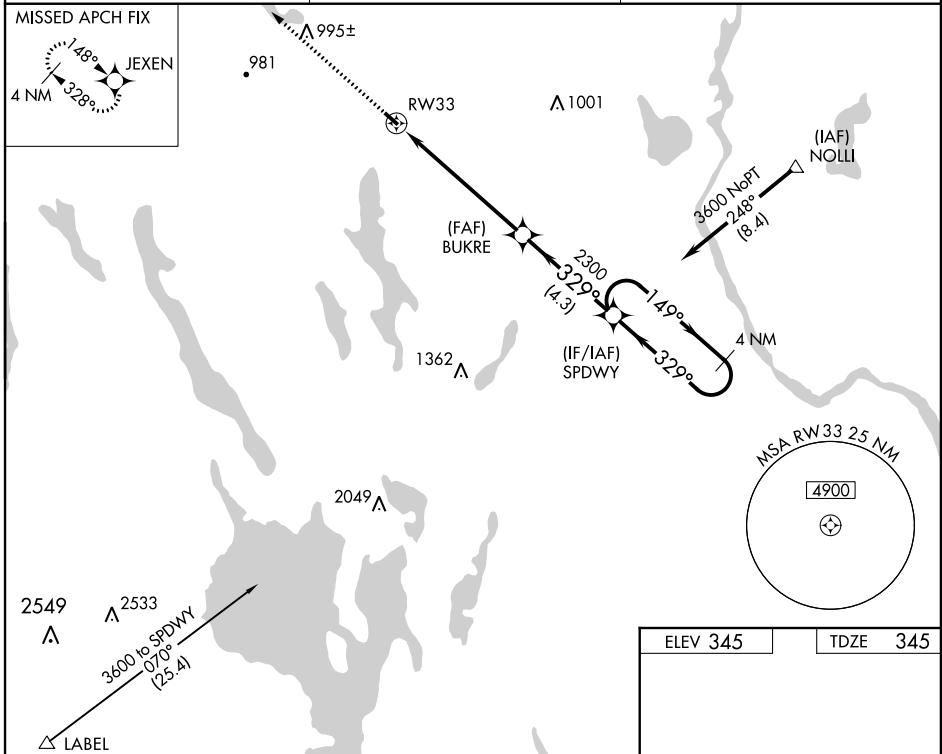
WAAS CH <b>86329</b> <b>W33A</b>	APP CRS <b>329°</b>	Rwy Idg <b>2997</b> TDZE <b>345</b> Apt Elev <b>345</b>
--	------------------------	---

# RNAV (GPS) RWY 33

OXFORD COUNTY RGNL (81B)

<p><b>▼</b> DME/DME RNP-0.3 NA. Procedure NA at night. Use Auburn/Lewiston altimeter setting; when not received, use Fryeburg altimeter setting and increase all MDA 40 feet, increase Circling Cat B visibility to 1 1/2. Helicopter visibility reduction below 1 SM NA.</p> <p><b>▲ NA</b></p>	<p><b>MISSED APPROACH:</b> Climb to 3700 direct JEXEN and hold, continue climb-in-hold to 3700.</p>
--	---

<p>LEW AWOS-3 <b>118.025</b></p>	<p>PORTLAND APP CON ★ <b>125.5 353.9</b></p>	<p>UNICOM <b>122.8 (CTAF) 0</b></p>
--------------------------------------	--	---



CATEGORY	A	B	C	D
LP MDA	1120-1 775 (800-1)	1120-1¼ 783 (800-1¼)		NA
LNNAV MDA	1140-1 795 (800-1)	1140-1¼ 795 (800-1¼)		NA
CIRCLING	1220-1¼ 875 (900-1¼)	1260-1¼ 915 (1000-1¼)		NA

NE-1, 31 DEC 2020 to 28 JAN 2021

NE-1, 31 DEC 2020 to 28 JAN 2021