

WAAS CH <b>81834</b> <b>W32A</b>	APP CRS <b>325°</b>	Rwy Idg TDZE <b>1819</b> Apt Elev <b>1823</b>	<b>4300</b>
--	------------------------	---	-------------

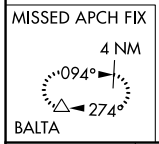
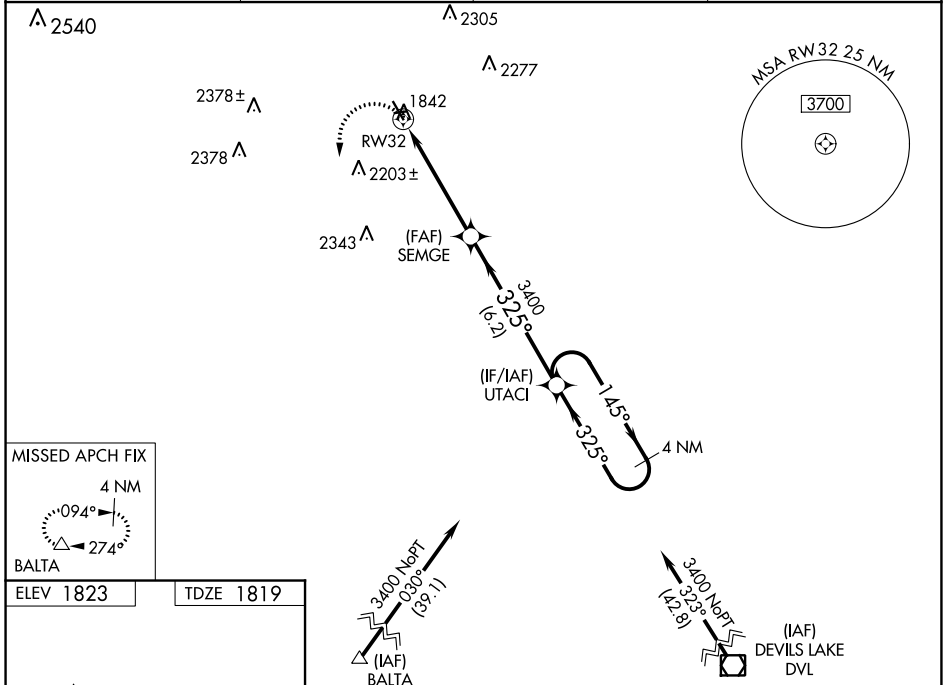
# RNAV (GPS) RWY 32

ROLLA MUNI (Ø6D)

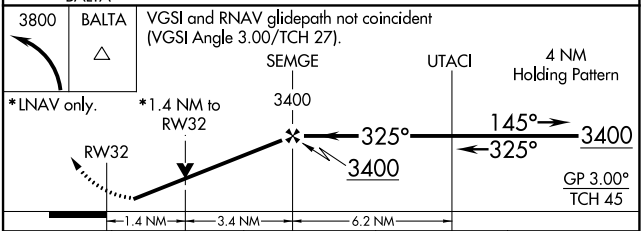
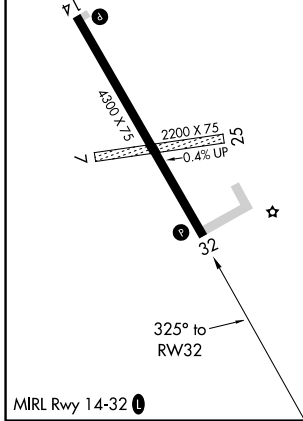
**⚠** For uncompensated Baro-VNAV systems, LNAV/VNAV NA below -18°C (0°F) or above 54°C (130°F).  
**⚠** DME/DME RNP-0.3 NA. Baro-VNAV and VDP NA when using Cando Muni altimeter setting. Rwy 32 helicopter visibility reduction below 3/4 SM NA. When local altimeter setting not received, use Cando Muni altimeter setting and increase all DA 114 feet and LPV visibility 1/2 mile all Cats and LNAV/VNAV visibility 5/8 mile all Cats; increase all MDA 120 feet and LNAV Cat C and D visibility 1/2 mile; increase Circling Cat C visibility 3/4 mile, Cat D visibility 1/4 mile. Circling NA to Rwys 7 and 25. Circling Rwy 14 NA at night.

**MISSED APPROACH:**  
 Climbing left turn to 3800 direct BALTA and hold.

AWOS-3 <b>118.125</b>	9D7 AWOS-3 <b>118.325</b>	MINNEAPOLIS CENTER <b>127.6 279.6</b>	UNICOM <b>122.8 (CTAF) ⓪</b>
--------------------------	------------------------------	--	---------------------------------



ELEV 1823	TDZE 1819
-----------	-----------



CATEGORY	A	B	C	D
LPV DA		2069-1	250 (300-1)	
LNAV/VNAV DA		2172-1 1/4	353 (400-1 1/4)	
LNAV MDA	2300-1	481 (500-1)	2300-1 3/8	481 (500-1 3/8)
<b>⓪</b> CIRCLING	2300-1 477 (500-1)	2340-1 517 (600-1)	2560-2 737 (800-2)	2700-2 3/4 877 (900-2 3/4)

NC-1, 31 DEC 2020 to 28 JAN 2021

NC-1, 31 DEC 2020 to 28 JAN 2021