

# RNAV (GPS) RWY 25

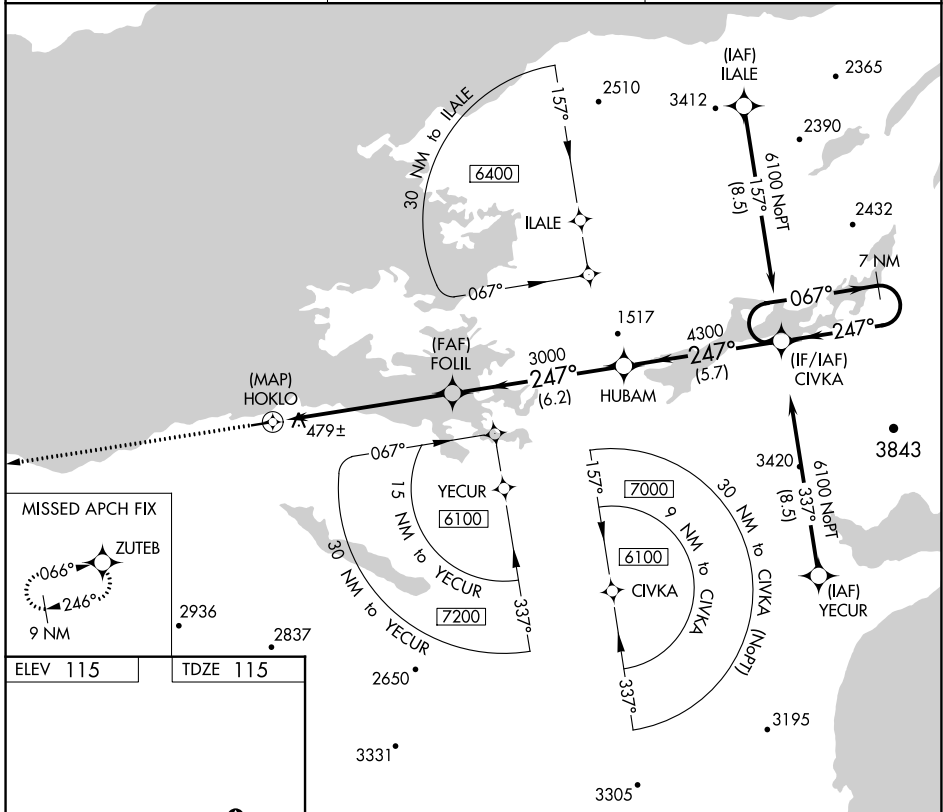
KOKHANOK (9K2) (PFFK)

APP CRS	Rwy Idg	<b>3300</b>
<b>247°</b>	TDZE	<b>115</b>
	Apt Elev	<b>115</b>

**NA** Rwy 25 helicopter visibility reduction below 1 SM NA.  
DME/DME RNP-0.3 NA. Use Iliamna altimeter setting.  
Procedure NA at night.

**MISSED APPROACH:** Climb to 4400 direct ZUTEB and hold, continue climb-in-hold to 4400.

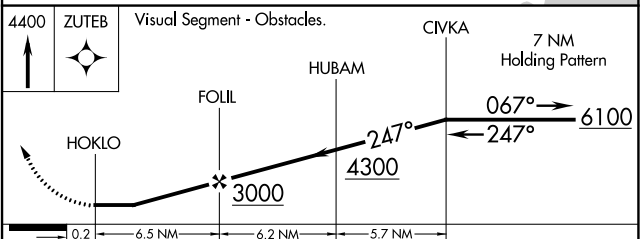
III/PAIL ASOS <b>134.95</b>	ANCHORAGE CENTER <b>118.8</b>	CTAF <b>122.9</b>
--------------------------------	----------------------------------	----------------------



**MISSED APCH FIX**

ELEV 115 TDZE 115

REIL Rwy 7 and 25 **1**  
MIRL Rwy 7-25 **1**



CATEGORY	A	B	C	D
LNAV MDA	880-1 765 (800-1)	880-1¼ 765 (800-1¼)		NA
<b>C</b> CIRCLING	1040-1¼ 925 (1000-1¼)	1100-1½ 985 (1000-1½)		NA

AK, 31 DEC 2020 to 25 FEB 2021

AK, 31 DEC 2020 to 25 FEB 2021