

APP CRS	Rwy Idg	<b>3300</b>
<b>066°</b>	TDZE	<b>115</b>
	Apt Elev	<b>115</b>

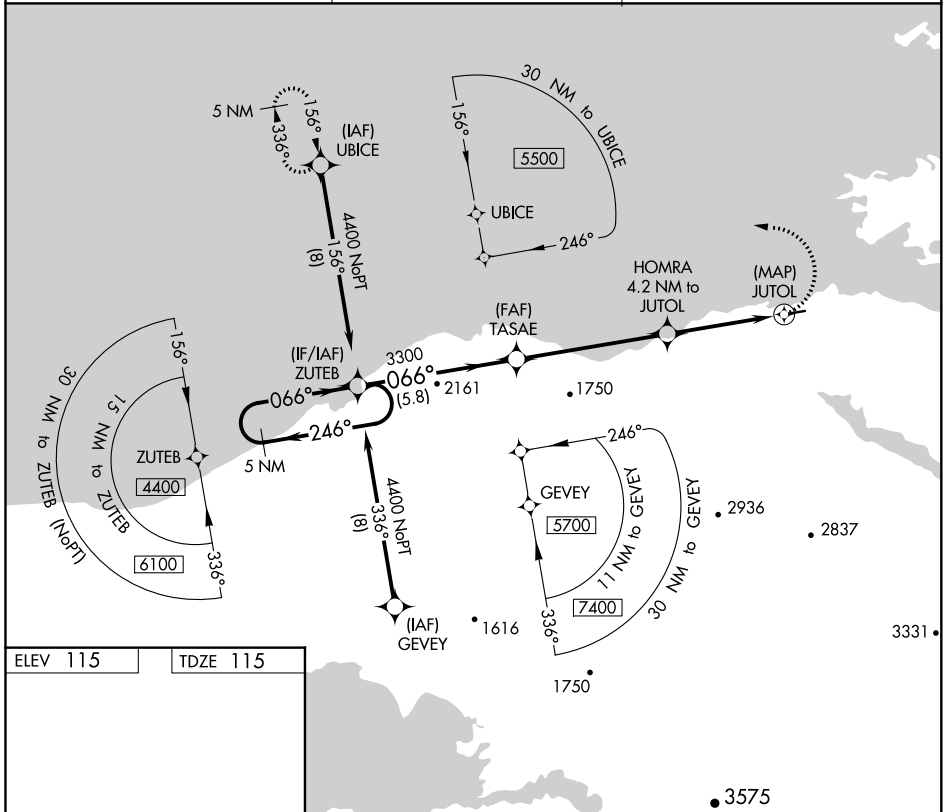
# RNAV (GPS) RWY 7

KOKHANOK (9K2) (PFFK)

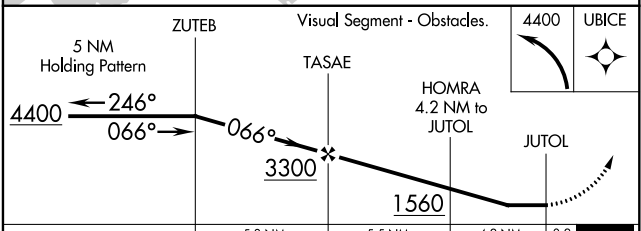
**NA** Rwy 7 helicopter visibility reduction below 1 SM NA.  
 DME/DME RNP-0.3 NA. Use Iliamna altimeter setting.  
 Procedure NA at night.

**MISSED APPROACH:** Climbing left turn to 4400 direct UBICE and hold, continue climb-in-hold to 4400.

III/PAIL ASOS <b>134.95</b>	ANCHORAGE CENTER <b>118.8</b>	CTAF <b>122.9</b>
--------------------------------	----------------------------------	----------------------



ELEV 115	TDZE 115
REIL Rws 7 and 25 <b>1</b> MIRL Rwy 7-25 <b>1</b>	



CATEGORY	A	B	C	D
LNAV MDA	820-1	705 (800-1)	820-2	705 (800-2)
<b>CIRCLING</b>	1040-1¼ 925 (1000-1¼)	1100-1½ 985 (1000-1½)	1100-3	985 (1000-3)

AK, 31 DEC 2020 to 25 FEB 2021

AK, 31 DEC 2020 to 25 FEB 2021