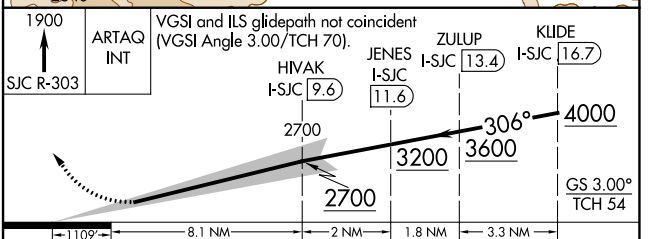
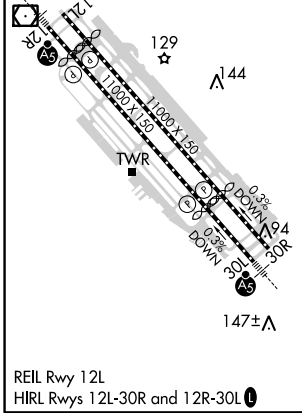
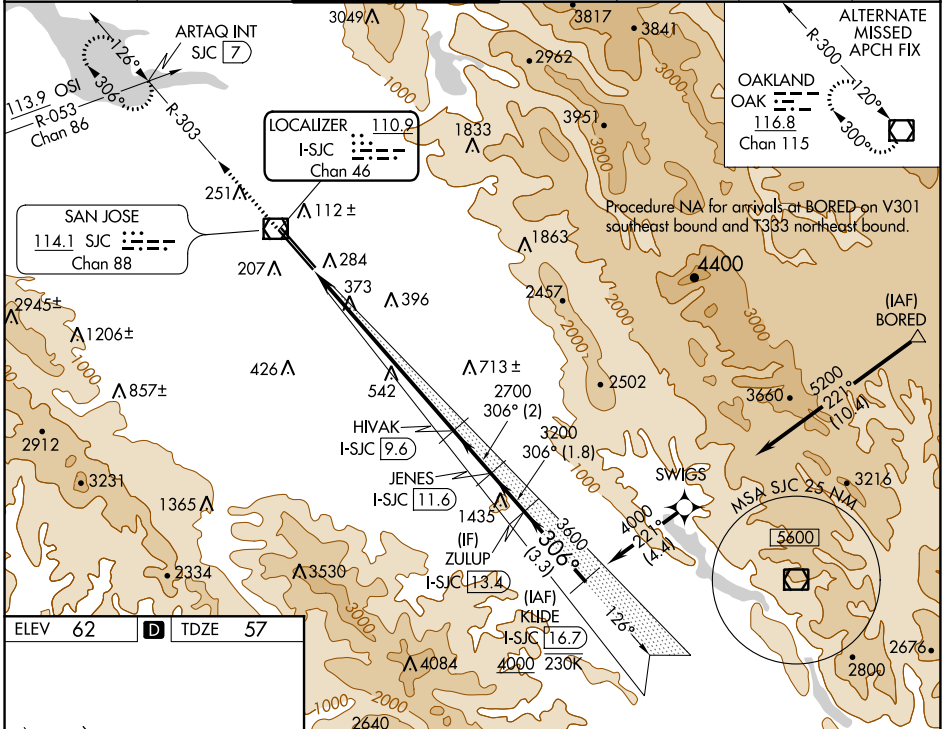


LOC/DME I-SJC 110.9 Chan 46	APP CRS 306°	Rwy Idg 7614 TDZE 57 Apt Elev 62
--	------------------------	---

ILS RWY 30L (SA CAT I & II)

NORMAN Y MINETA SAN JOSE INTL (SJC)

RNAV 1-GPS or RADAR required for procedure entry. DME required. From BORED: RNAV 1-GPS required.				MALSR	MISSED APPROACH: Climb to 1900 on SJC VOR/DME R-303 to ARTAQ INT/SJC 7 DME and hold.	
⚠ SA CAT I: Requires specific OPSPEC, MSPEC, or LOA approval and use of HUD to DH. ⚠ SA CAT II: Reduced lighting: requires specific OPSPEC, MSPEC, or LOA approval and use of autoland or HUD to touchdown. SA CAT I/II: Procedure NA when tower closed.						
D-ATIS 126.95	NORCAL APP CON 120.1 290.25	SAN JOSE TOWER* 124.0 (CTAF) 0 257.6	GND CON 121.7	CLNC DEL 118.0	CPDLC	UNICOM 122.95



CATEGORY	A	B	C	D
S-ILS 30L	SA CAT I	RA 147/14	150 DA 207	
S-ILS 30L	SA CAT II	RA 97/12	100 DA 157	

SA CATEGORY I & II ILS - SPECIAL AIRCREW AND AIRCRAFT CERTIFICATION REQUIRED

SW-2, 28 JAN 2021 to 25 FEB 2021

SW-2, 28 JAN 2021 to 25 FEB 2021