

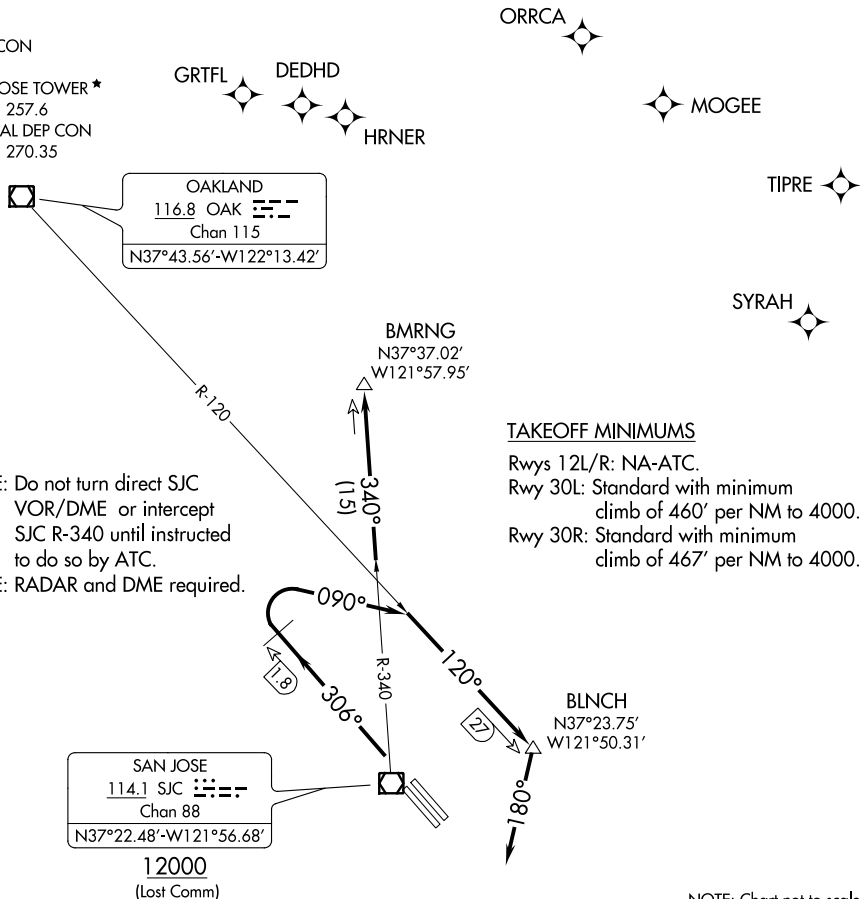
(LOUPE5.BMRNG) 19143
LOUPE FIVE DEPARTURE

AL-693 (FAA)

NORMAN Y MINETA SAN JOSE INTL (SJC)
 SAN JOSE, CALIFORNIA

D-ATIS
 126.95
 CLNC DEL
 118.0
 CPDLC
 GND CON
 121.7
 SAN JOSE TOWER ★
 124.0 257.6
 NORCAL DEP CON
 121.3 270.35

**TOP ALTITUDE:
 5000**



NOTE: Do not turn direct SJC VOR/DME or intercept SJC R-340 until instructed to do so by ATC.
 NOTE: RADAR and DME required.

TAKEOFF MINIMUMS
 Rwy 12L/R: NA-ATC.
 Rwy 30L: Standard with minimum climb of 460' per NM to 4000.
 Rwy 30R: Standard with minimum climb of 467' per NM to 4000.

SAN JOSE
 114.1 SJC
 Chan 88
 N37°22.48'-W121°56.68'

12000
 (Lost Comm)

NOTE: Chart not to scale.

DEPARTURE ROUTE DESCRIPTION

TAKEOFF RUNWAYS 30L/R: Climb heading 306°, at SJC VOR/DME 1.8 DME northwest turn right heading 090° to intercept OAK R-120 to BLNCH, then turn right heading 180° for RADAR vectors to SJC VOR/DME, then on SJC R-340 to BMRNG INT. Maintain 5000, expect filed altitude 10 minutes after departure.

LOST COMMUNICATIONS

RUNWAYS 30L/R: If not in contact with departure control upon reaching BLNCH, depart BLNCH heading 180°. When able turn right direct SJC VOR/DME, cross SJC VOR/DME at or above 12000, then on SJC R-340 to BMRNG INT before proceeding on course.

LOUPE FIVE DEPARTURE
 (LOUPE5.BMRNG) 25APR19

SAN JOSE, CALIFORNIA
 NORMAN Y MINETA SAN JOSE INTL (SJC)

SW-2, 28 JAN 2021 to 25 FEB 2021

SW-2, 28 JAN 2021 to 25 FEB 2021