

APP CRS 126°	Rwy Idg 8831
	TDZE 44
	Apt Elev 62

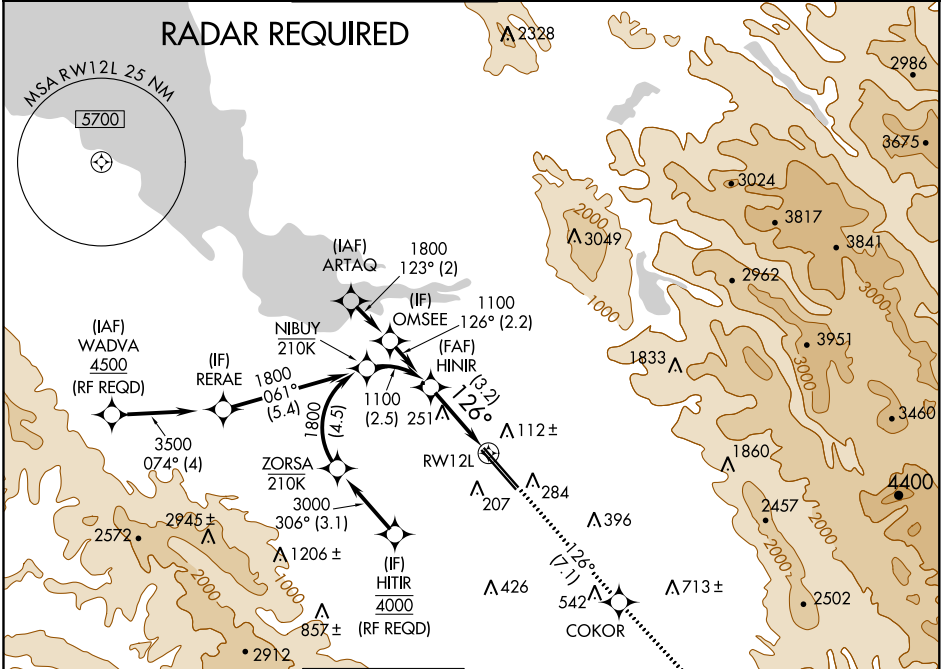
RNAV (RNP) Z RWY 12L

NORMAN Y MINETA SAN JOSE INTL (SJC)

For uncompensated Baro-VNAV systems, procedure NA below 0°C (32°F) or above 54°C (130°F). GPS required.

MISSED APPROACH: Climb to 4600 on track 126° to COKOR and on track 124° to GILRO and hold.

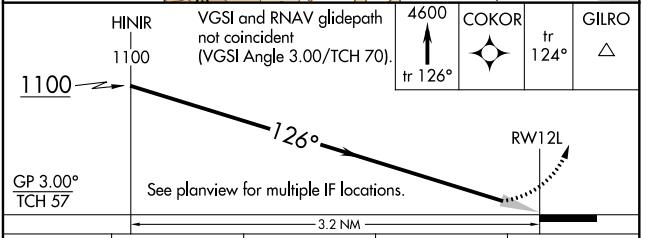
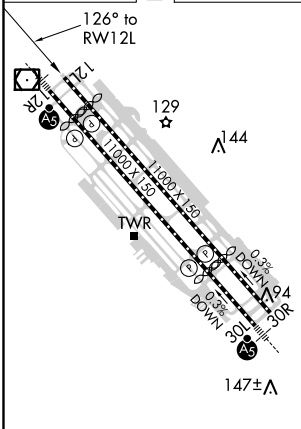
D-ATIS 126.95	NORCAL APP CON 120.1 290.25	SAN JOSE TOWER * 124.0 (CTAF) 257.6	GND CON 121.7	CLNC DEL 118.0	CPDLC	UNICOM 122.95
-------------------------	---------------------------------------	---	-------------------------	--------------------------	-------	-------------------------



SW-2, 28 JAN 2021 to 25 FEB 2021

SW-2, 28 JAN 2021 to 25 FEB 2021

ELEV 62	D	TDZE 44
----------------	----------	----------------



CATEGORY	A	B	C	D
RNP 0.18 DA		385-1 $\frac{1}{8}$	341 (400-1 $\frac{1}{8}$)	
RNP 0.30 DA		451-1 $\frac{3}{8}$	407 (400-1 $\frac{3}{8}$)	

REIL Rwy 12L
HIRL Rwys 12L-30R and 12R-30L

AUTHORIZATION REQUIRED