

APP CRS 126°	Rwy Idg 8587
	TDZE 46
	Apt Elev 62

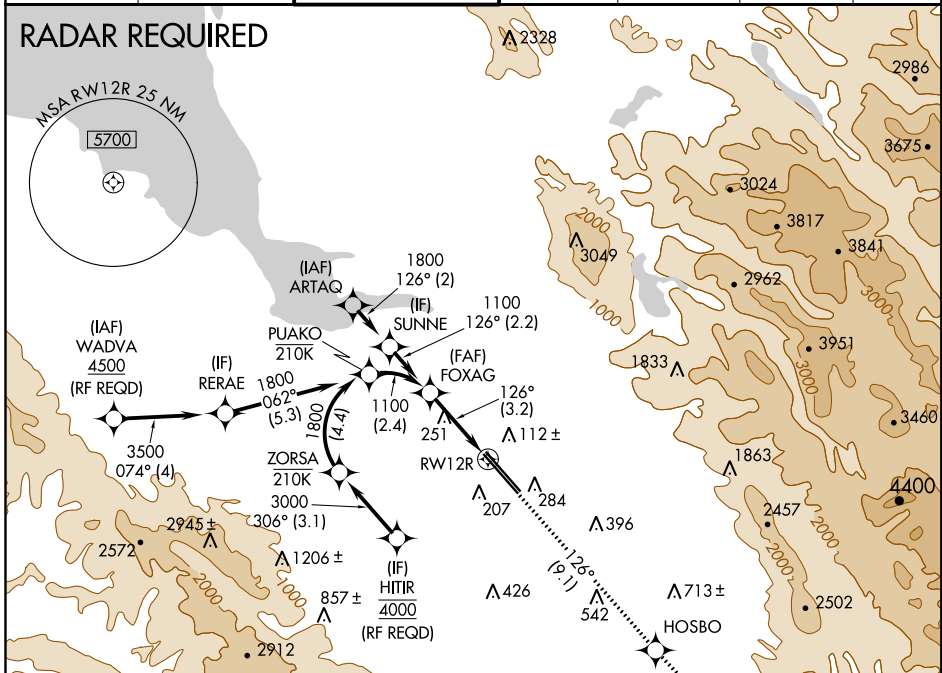
RNAV (RNP) Z RWY 12R

NORMAN Y MINETA SAN JOSE INTL (SJC)

For uncompensated Baro-VNAV systems, procedure NA below 0°C (32°F) or above 54°C (130°F). GPS required.	MALS R	MISSED APPROACH: Climb to 4600 on track 126° to HOSBO and on track 124° to GILRO and hold.
	MALS R	

D-ATIS 126.95	NORCAL APP CON 120.1 290.25	SAN JOSE TOWER* 124.0 (CTAF) 0 257.6	GND CON 121.7	CLNC DEL 118.0	CPDLC	UNICOM 122.95
-------------------------	---------------------------------------	--	-------------------------	--------------------------	-------	-------------------------

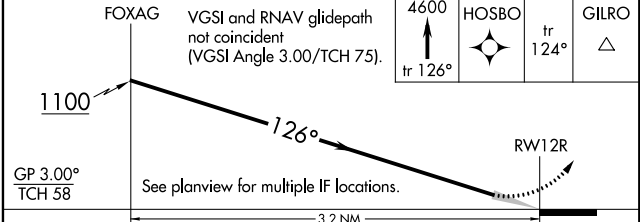
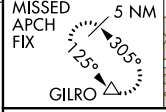
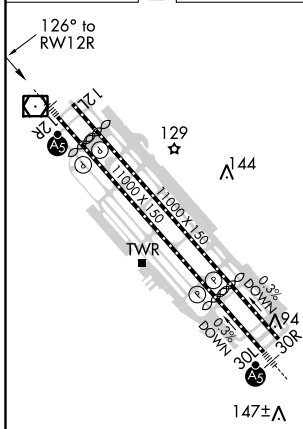
RADAR REQUIRED



SW-2, 28 JAN 2021 to 25 FEB 2021

SW-2, 28 JAN 2021 to 25 FEB 2021

ELEV 62	D	TDZE 46
---------	----------	---------



CATEGORY	A	B	C	D
RNP 0.15 DA		380-5/8	334 (400-5/8)	
RNP 0.30 DA		486-1	440 (500-1)	

REIL Rwy 12L
HIRL Rwys 12L-30R and 12R-30L

AUTHORIZATION REQUIRED