

APP CRS	Rwy Idg	7597
306°	TDZE	55
	Apt Elev	62

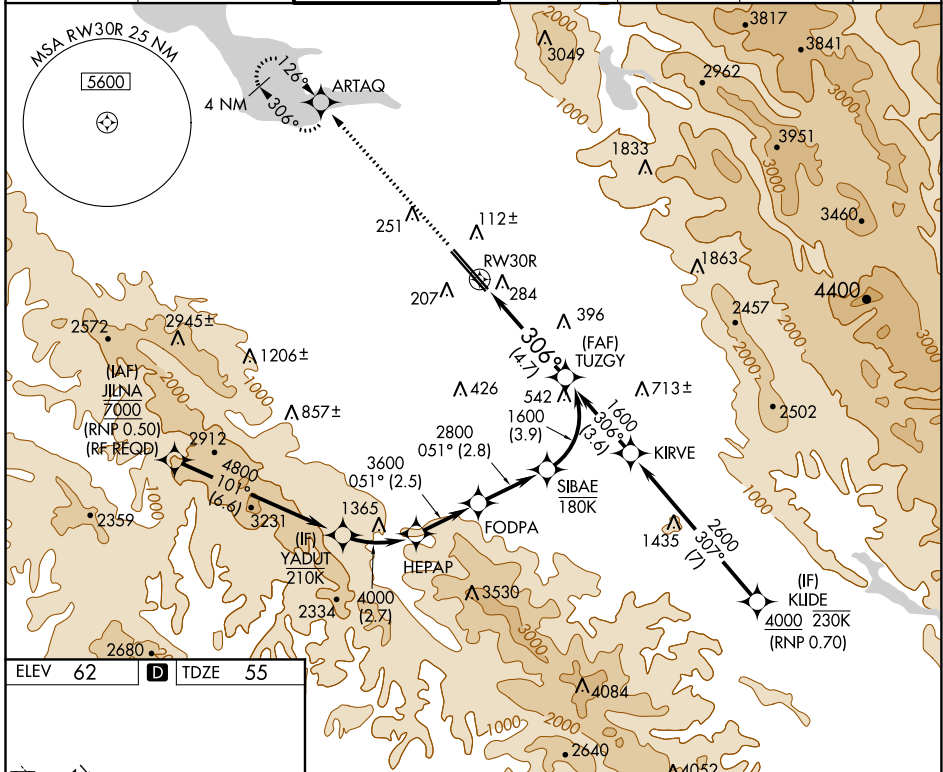
RNAV (RNP) Z RWY 30R

NORMAN Y MINETA SAN JOSE INTL (SJC)

▽ For uncompensated Baro-VNAV systems, procedure NA below -1°C (31°F) or above 54°C (130°F). GPS required.

MISSED APPROACH: Climb to 600 then climb to 2300 direct ARTAQ and hold.

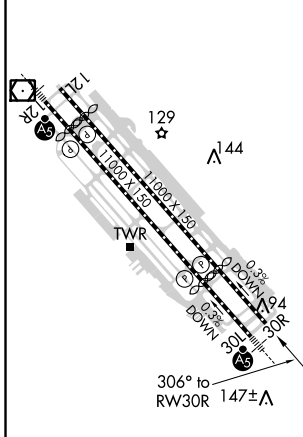
D-ATIS	NORCAL APP CON	SAN JOSE TOWER *	GND CON	CLNC DEL	CPDLC	UNICOM
126.95	120.1 290.25	124.0 (CTAF) 0 257.6	121.7	118.0		122.95



SW-2, 28 JAN 2021 to 25 FEB 2021

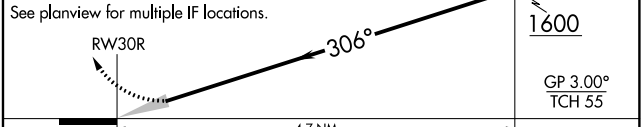
SW-2, 28 JAN 2021 to 25 FEB 2021

ELEV 62	D	TDZE 55
---------	----------	---------



600 2300 ARTAQ VGSI and RNAV glidepath not coincident (VGSI Angle 3.00/TCH 69°)

TUZGY 1600



CATEGORY	A	B	C	D
RNP 0.11 DA		404-1 $\frac{1}{8}$	349 (400-1 $\frac{1}{8}$)	
RNP 0.20 DA		475-1 $\frac{3}{8}$	420 (500-1 $\frac{3}{8}$)	
RNP 0.30 DA		541-1 $\frac{5}{8}$	486 (500-1 $\frac{5}{8}$)	

REIL Rwy 12L
HIRL Rwy 12L-30R and 12R-30L

AUTHORIZATION REQUIRED