

(SILCN.SILCN4) 17173

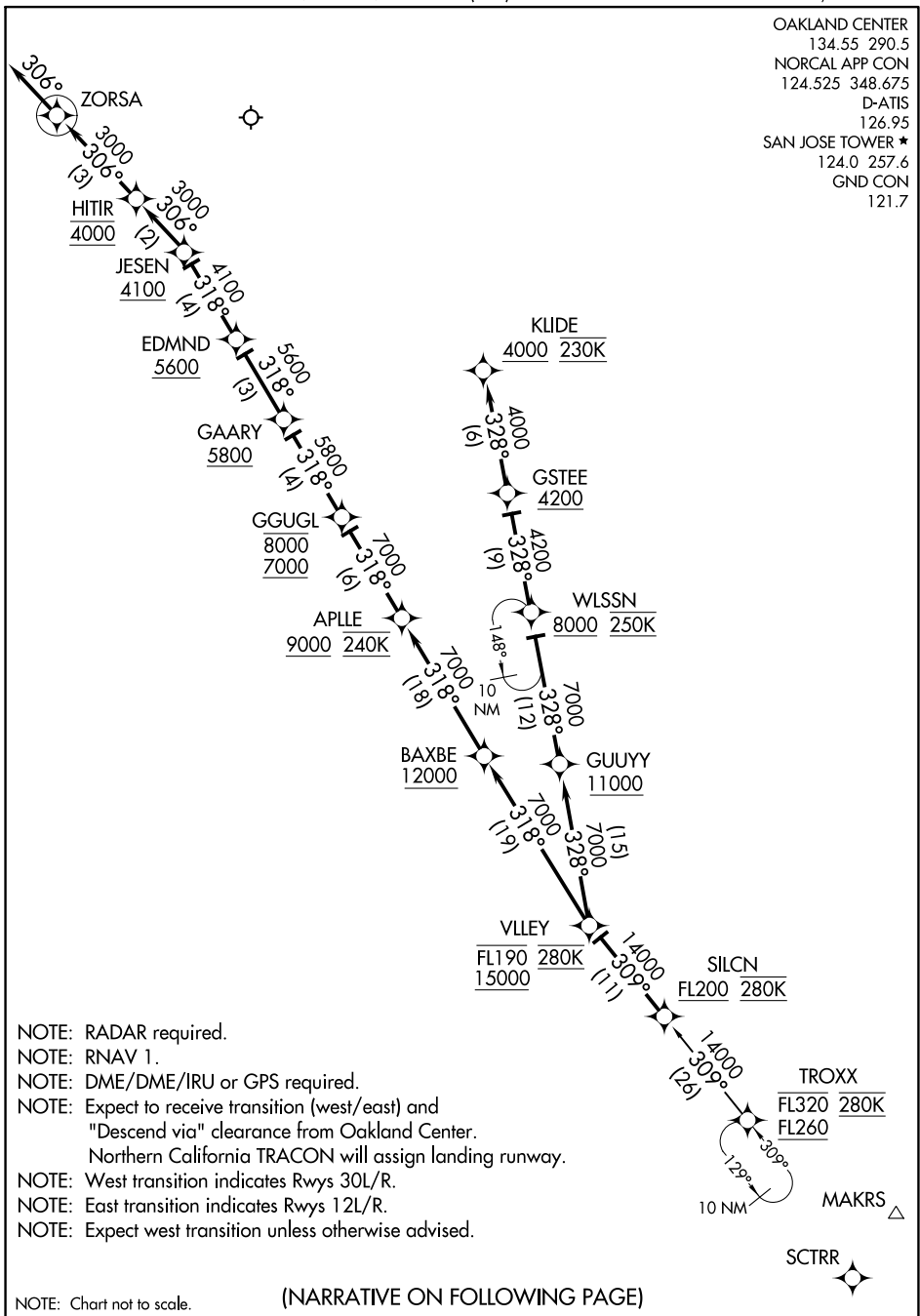
SILCN FOUR ARRIVAL (RNAV)

AL-693 (FAA)

NORMAN Y MINETA SAN JOSE INTL (SJC)

SAN JOSE, CALIFORNIA

OAKLAND CENTER
 134.55 290.5
 NORCAL APP CON
 124.525 348.675
 D-ATIS
 126.95
 SAN JOSE TOWER ★
 124.0 257.6
 GND CON
 121.7



NOTE: RADAR required.

NOTE: RNAV 1.

NOTE: DME/DME/IRU or GPS required.

NOTE: Expect to receive transition (west/east) and "Descend via" clearance from Oakland Center.

Northern California TRACON will assign landing runway.

NOTE: West transition indicates Rwy 30L/R.

NOTE: East transition indicates Rwy 12L/R.

NOTE: Expect west transition unless otherwise advised.

NOTE: Chart not to scale.

(NARRATIVE ON FOLLOWING PAGE)

SILCN FOUR ARRIVAL (RNAV)

(SILCN.SILCN4) 21JUL16

SAN JOSE, CALIFORNIA

NORMAN Y MINETA SAN JOSE INTL (SJC)

SW-2, 28 JAN 2021 to 25 FEB 2021

SW-2, 28 JAN 2021 to 25 FEB 2021

STAR

