

SUNOL ONE DEPARTURE

D-ATIS
126.95
CLNC DEL
118.0
CPDLC
GND CON
121.7
SAN JOSE TOWER*
124.0 257.6
NORCAL DEP CON
121.3 270.35

SACRAMENTO
115.2 SAC
Chan 99
N38°26.62'-W121°33.10'
L-2-3, H-3

LINDEN
114.8 LIN
Chan 95
N38°04.47'-W121°00.23'
L-2-3, H-3

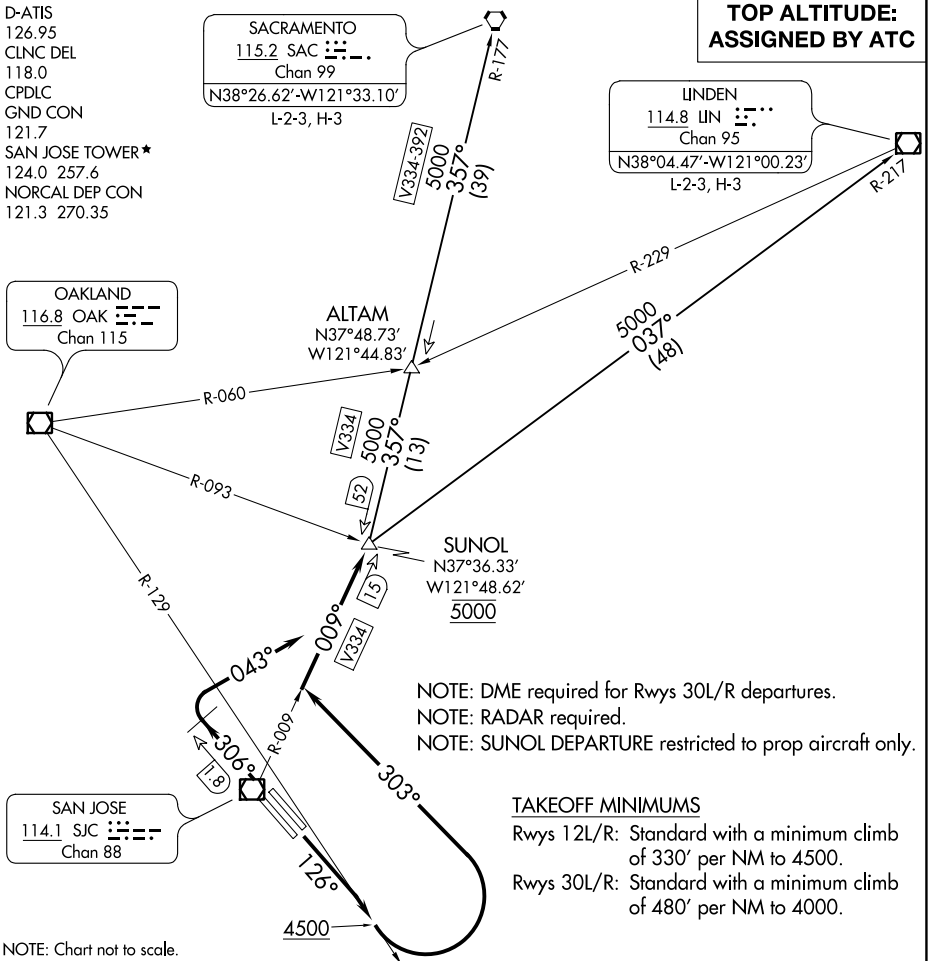
**TOP ALTITUDE:
ASSIGNED BY ATC**

OAKLAND
116.8 OAK
Chan 115

ALTAM
N37°48.73'
W121°44.83'

SUNOL
N37°36.33'
W121°48.62'
5000

SAN JOSE
114.1 SJC
Chan 88



NOTE: DME required for Rwy 30L/R departures.
NOTE: RADAR required.
NOTE: SUNOL DEPARTURE restricted to prop aircraft only.

TAKEOFF MINIMUMS

Rwys 12L/R: Standard with a minimum climb of 330' per NM to 4500.
Rwys 30L/R: Standard with a minimum climb of 480' per NM to 4000.

NOTE: Chart not to scale.

DEPARTURE ROUTE DESCRIPTION

TAKEOFF RUNWAYS 12L/R: Climb heading 126° to intercept and proceed on OAK R-129 to 4500, then turn left heading 303° for RADAR vectors to intercept and proceed on SJC R-009 to cross SUNOL at 5000, thence

TAKEOFF RUNWAYS 30L/R: Climb heading 306° at SJC 1.8 DME northwest of SJC VOR/DME, turn right heading 043° to intercept and proceed on SJC R-009 to cross SUNOL at 5000, thence

. . . . then on (transition) or (assigned route). Maintain ATC assigned altitude.

LINDEN TRANSITION (SUNOL1.LIN): From over SUNOL on LIN R-217 to LIN VOR/DME.

SACRAMENTO TRANSITION (SUNOL1.SAC): From over SUNOL on SAC R-177 to SAC VORTAC.

SW-2, 28 JAN 2021 to 25 FEB 2021

SW-2, 28 JAN 2021 to 25 FEB 2021