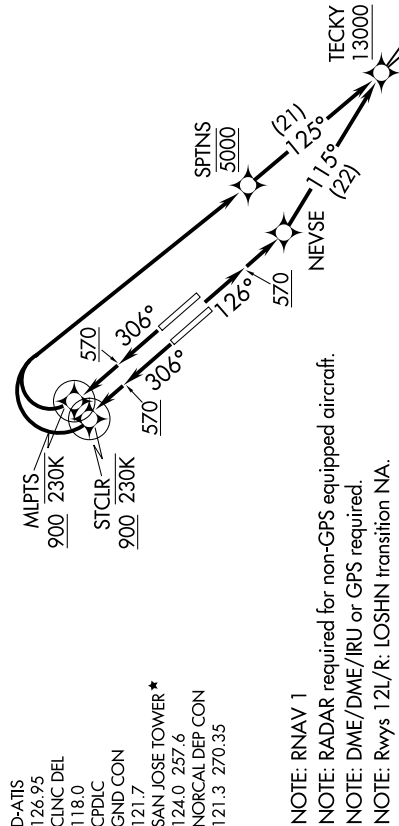


**TOP ALTITUDE:
FL190**

TAKEOFF MINIMUMS

Rwys 12L/R: Standard with a minimum climb of 500' per NM to 570.

Rwys 30L/R: Standard with a minimum climb of 500' per NM to 700.



DEPARTURE ROUTE DESCRIPTION

TAKEOFF RUNWAYS 12L, 12R: Climb heading 126° to 570, then direct NEVSE, then on track 115° to cross TECKY at or above 13000, thence. . . .

TAKEOFF RUNWAY 30L: Climb heading 306° to 570, then direct to cross STCLR at or above 900 at or below 230K, then right turn direct to cross SPTNS at 5000, then on track 125° to cross TECKY at or above 13000, thence. . . .

TAKEOFF RUNWAY 30R: Climb heading 306° to 570, then direct to cross MLPTS at or above 900 at or below 230K, then right turn direct to cross SPTNS at 5000, then on track 125° to cross TECKY at or above 13000, thence. . . .

. . . on (transition), maintain FL190. Expect filed altitude 10 minutes after departure.

EBAYE TRANSITION (TECKY3.EBAYE)
LOSHN TRANSITION (TECKY3.LOSHN)

NOTE: Chart not to scale.

SW-2, 28 JAN 2021 to 25 FEB 2021

SW-2, 28 JAN 2021 to 25 FEB 2021