

APP CRS	Rwy Idg	<b>5009</b>
<b>137°</b>	TDZE	<b>494</b>
	Apt Elev	<b>494</b>

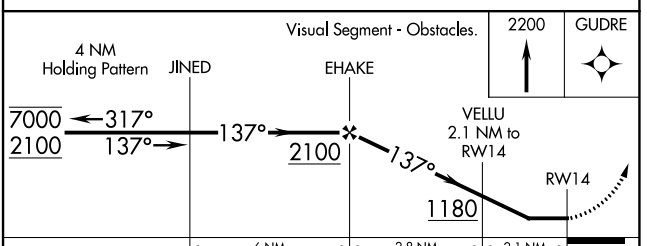
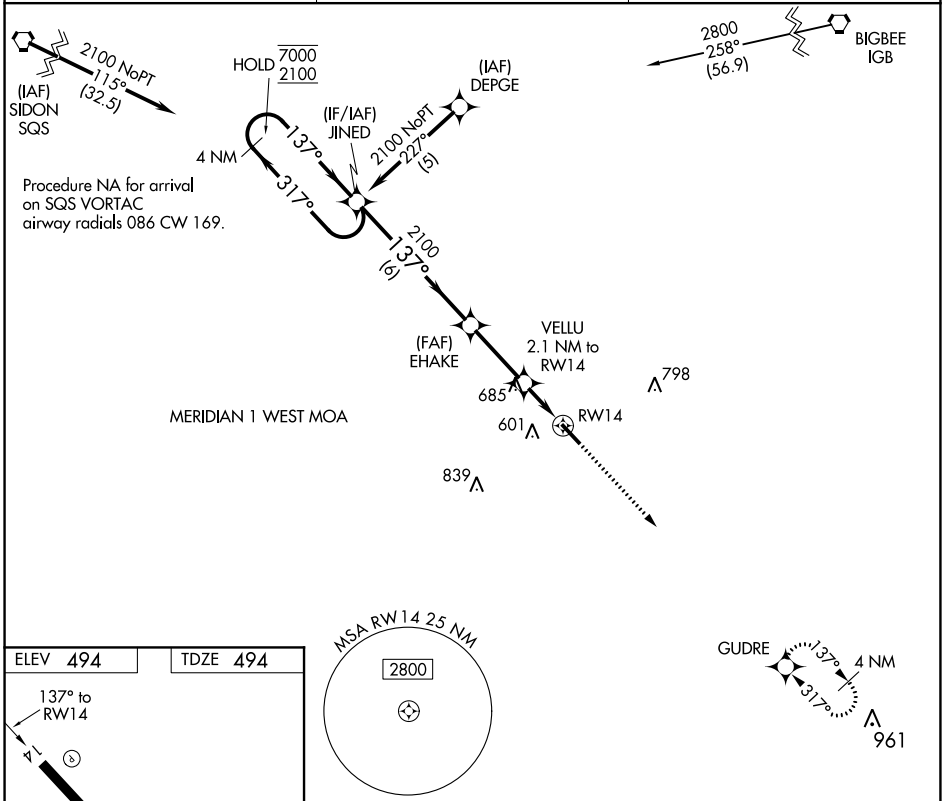
# RNAV (GPS) RWY 14

KOSCIUSKO-ATTALA COUNTY (OSX)

RNP APCH. MISSED APPROACH: Climb to 2200 direct GUDRE and hold.

**NA** Rwy 14 helicopter visibility reduction below 1 SM NA. Procedure NA at night. Use Philadelphia altimeter setting; when not received, use Greenwood altimeter setting and increase all MDAs 80 feet and LNAV Cat C and Circling Cat C visibility ¼ SM.

MPE AWOS-3P <b>118.725</b>	MEMPHIS CENTER <b>132.75 350.25</b>	CTAF <b>122.9</b>
-------------------------------	--	----------------------



CATEGORY	A	B	C	D
LNAV MDA	1020-1	526 (600-1)	1020-1½ 526 (600-1½)	NA
CIRCLING	1020-1	526 (600-1)	1020-1½ 526 (600-1½)	NA

SC-4, 28 JAN 2021 to 25 FEB 2021

SC-4, 28 JAN 2021 to 25 FEB 2021