

VORTAC AEX <b>116.1</b> Chan <b>108</b>	APP CRS <b>110°</b>	Rwy Idg TDZE Apt Elev <b>N/A</b> <b>N/A</b> <b>79</b>
---	------------------------	--

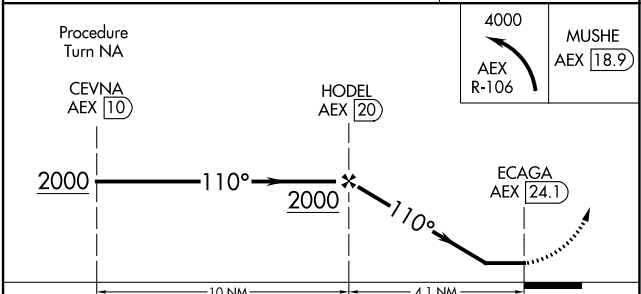
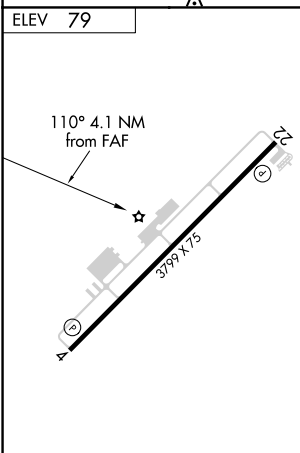
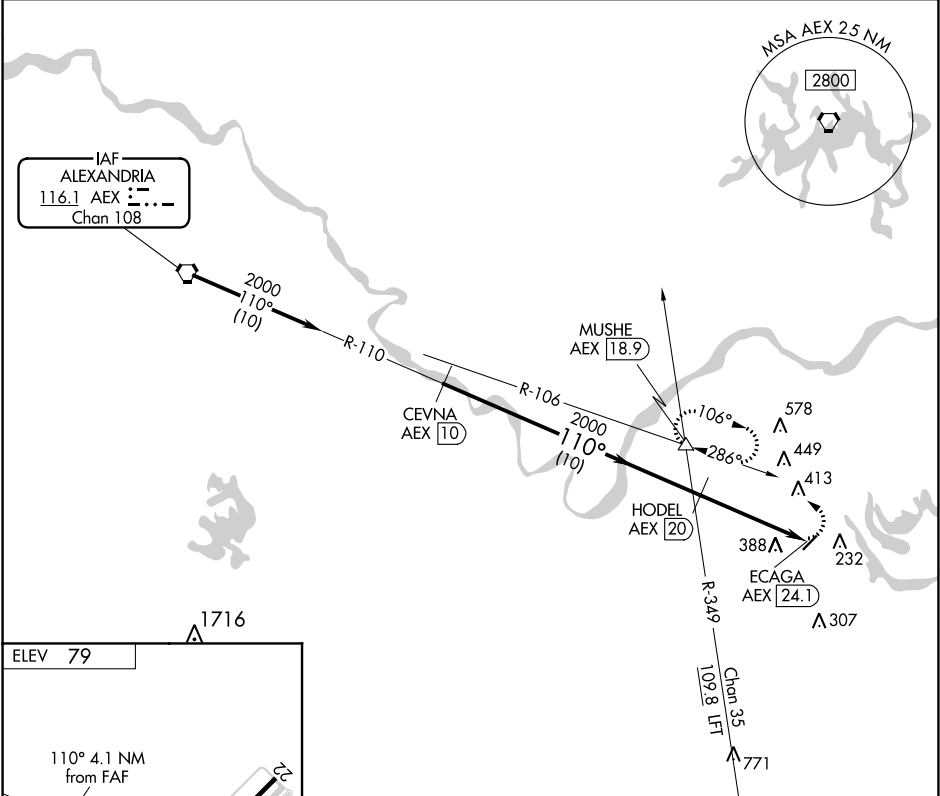
**VOR/DME-A**  
MARKSVILLE MUNI (MKV)

**▽** Use Esler Rgnl altimeter setting. When not received, use Alexandria Intl altimeter setting. When neither is received, procedure NA.

**MISSED APPROACH:** Climbing left turn to 4000 via AEX R-106 to MUSHE INT/AEX 18.9 DME and hold.

POLK APP CON  
**125.4 302.2**

CTAF  
**122.9**



CATEGORY	A	B	C	D
CIRCLING	760-1 681 (700-1)	760-1¼ 681 (700-1¼)	NA	

MIRL Rwy 4-22  
REIL Rwys 4 and 22

SC-4, 28 JAN 2021 to 25 FEB 2021

SC-4, 28 JAN 2021 to 25 FEB 2021