

WAAS CH 72628 W36A	APP CRS 358°	Rwy Idg TDZE 256 Apt Elev 256	3204
--	------------------------	---	-------------

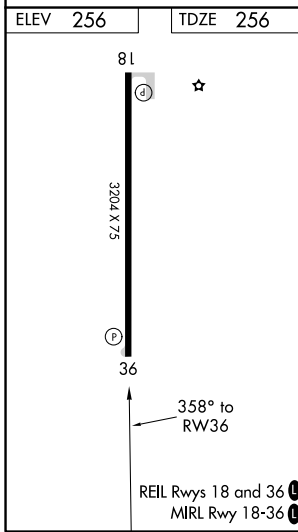
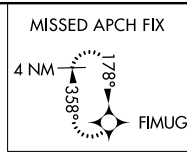
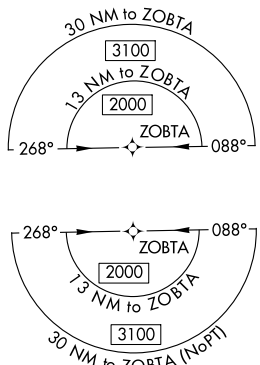
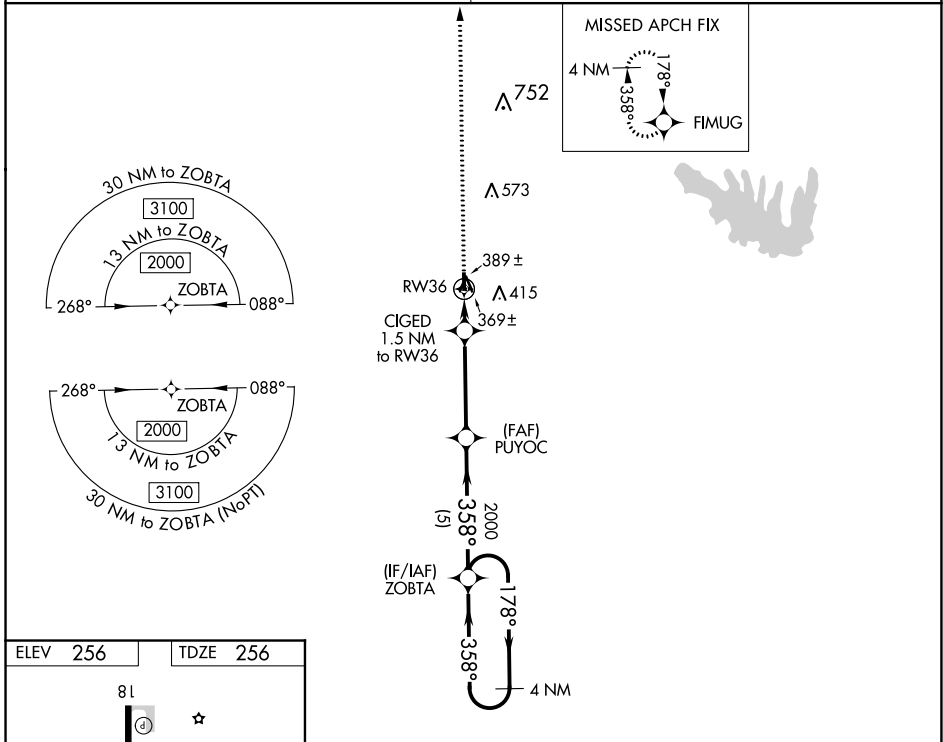
RNAV (GPS) RWY 36

JONESBORO (F88)

NA Procedure NA at night. DME/DME RNP-0.3 NA. Helicopter visibility reduction below 1 SM NA. Obtain local altimeter setting on CTAF; when not received, use Rston altimeter setting and increase all MDA 60 feet, and increase LP and LNAV Cat C visibility ¼ mile.

MISSED APPROACH:
Climb to 2400 direct FIMUG and hold.

MONROE APP CON ★ **126.9 307.9** (CTAF) **122.9 0**



2400	FIMUG	PUYOC	ZOBTA	4 NM Holding Pattern
↑	✦	✦	✦	✦
	CIGED 1.5 NM to RW36	2000	2000	2000
	RW36	760	358°	178°
	1.5 NM	3.8 NM	5 NM	
	3.00° TCH 50			
CATEGORY	A	B	C	D
LP MDA	620-1 364 (400-1)			NA
LNAV MDA	640-1	384 (400-1)	640-1½ 384 (400-1½)	NA
CIRCLING	780-1	524 (600-1)	780-1½ 524 (600-1½)	NA

SC-4, 28 JAN 2021 to 25 FEB 2021

SC-4, 28 JAN 2021 to 25 FEB 2021