

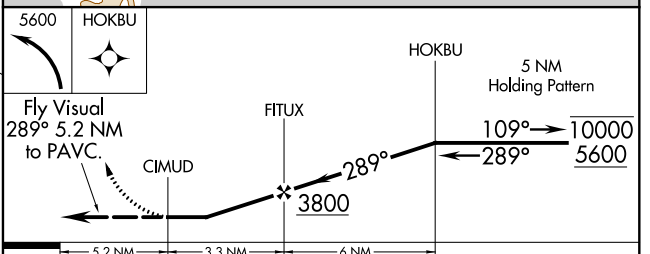
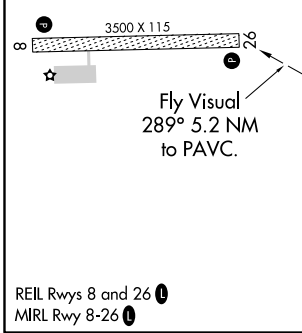
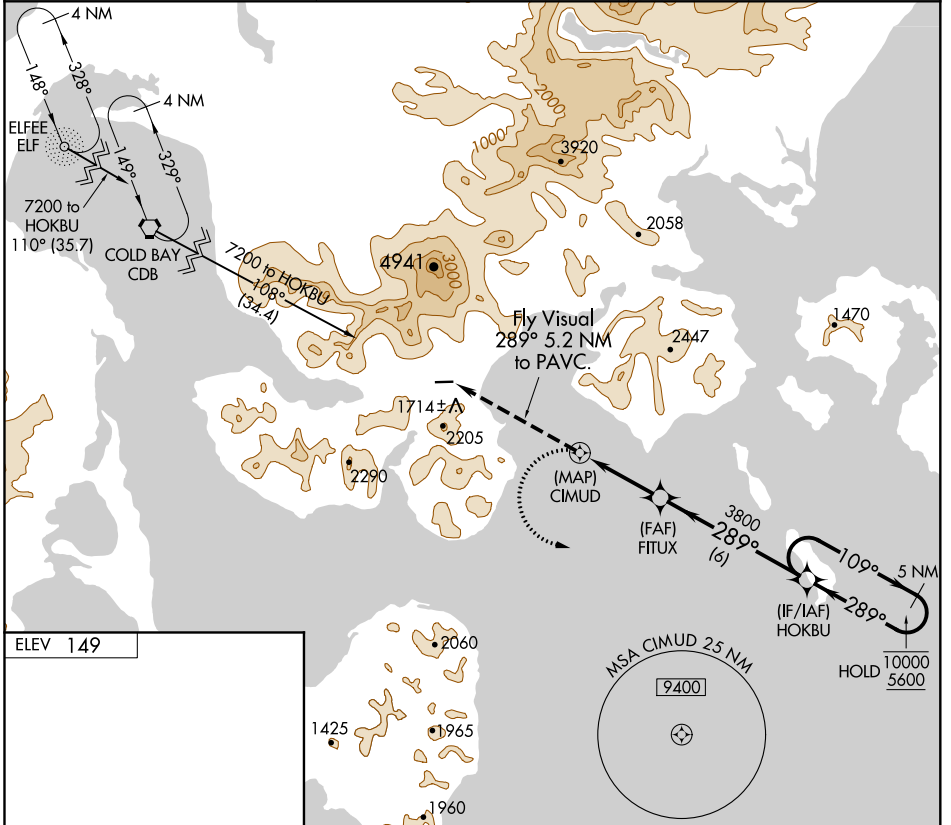
APP CRS <b>289°</b>	Rwy Idg TDZE Apt Elev	<b>N/A</b> <b>N/A</b> <b>149</b>
------------------------	-----------------------------	--

# RNAV (GPS)-A

KING COVE (KVC)(PAVC)

RNP APCH.	<p>Procedure NA at night.</p> <p>⚠ Circling NA north Rwy 8 and 26.</p>	<p>MISSED APPROACH: Climbing left turn to 5600 direct HOKBU and hold.</p>
-----------	--	---

AWOS-3P <b>118.325</b>	ANCHORAGE CENTER <b>118.5 278.3</b>	CTAF <b>122.9</b>
---------------------------	--	----------------------



CATEGORY	A	B	C	D
2080-6	2520-6			
1931 (2000-6)	2371 (2400-6)			
<b>C</b> CIRCLING				NA

AK, 31 DEC 2020 to 25 FEB 2021

AK, 31 DEC 2020 to 25 FEB 2021